



2024

Year In Review



from the BOARD CHAIR & CHIEF EXECUTIVE

We are pleased to present the ILT (Group) 2024 Year in Review.

Once again this has been a uniquely challenging year for our industry. Our organisation faced these challenges well however, and the financial results and organisational outcomes outlined within this report are those that our community can be proud of.

In what was a tale of two halves, revenues for the year were up a solid 4% to over \$111 million. Our financial year began with demand for our services remaining high, but our ability to satisfy this demand being challenged by the stubbornly low unemployment rate. As an organisation we did very well in supplementing our talent pool with highly skilled migrant labour. Unfortunately, as quickly as we had resolved the labour shortage issues, demand then began to markedly shift

in the latter part of the financial year, as high inflation and a growing cost-of-living crisis began to bite.

The effects of this, along with significant supplier cost increases, squeezed our margins and put considerable pressure on our overall result. This was further compounded by a record high depreciation cost. It was therefore pleasing to generate a pre-tax and Donations surplus that was up 9% on the year prior to \$6.619 million.

This enabled Donations for the year, at \$3.277 million, to be up \$767k or more than 30% on the year prior. This contributed to the total of Donations from ILT Group exceeding \$9 million for the first time in 10 years, a total that was \$737k or almost 9% higher than the year prior. This commendable outcome supported a huge range of groups across sectors within our community.



Paddy O'Brien *Chair* **Chris Ramsay** *Chief Executive*

The future of ILT looks strong. This strength is born from you, the people of Invercargill, our shareholders. Your support of our businesses is the reason our Board can make the positive, impactful funding decisions that they do. Whether it be continuing to ensure our children learn to swim for free, or our significant ILT Group support of Te Unua Museum of Southland (so far at \$1 million), ILT truly is for our community.



Paddy O'Brien



Angela Newell



Sean Bellew



Sheree Carey



Graham Hawkes



Suzanne Prentice



Jason McKenzie



Mandy Smith



Andrew Ward

Thanks FROM US

Our 'people first' approach has been maintained throughout the year. Overall staff levels peaked at just over 720, and our turnover rate indicates that the value of working for ILT is being recognised by those who matter-our people. It has also been very pleasing to help develop the hospitality superstars of the future through our improved training and development initiatives, resulting in excellent internal progression, promotion, and tangible career pathways.

Delivering over \$9 million in returns to the community is an incredible achievement, especially in the current economic climate. As a board, we are immensely proud of the outstanding efforts of our ILT family during the past year. Your commitment and dedication help us continue to be market leaders in the hospitality industry, and your efforts ensure community benefits are at a level that makes a real difference. Ngā mihi nui.

The ILT Board: Paddy O'Brien (President), Angela Newell (Deputy President), Sean Bellew, Sheree Carey, Graham Hawkes, and Suzanne Prentice

The ILT Foundation Trustees: Paddy O'Brien (Chair), Angela Newell, Sean Bellew, Sheree Carey, Graham Hawkes, Suzanne Prentice, Jason McKenzie, Mandy Smith, and Andrew Ward

ILT Executive Management Team

Chris Ramsay
Chief Executive

Kelly Burgess
People and Capability Executive

Nikki Buckley
Corporate Sales Executive

Bharat Guha
Chief Financial Officer

Terry Laidlaw
Operations Executive

Angee Shand
Marketing & Innovation Executive



HIGHLIGHTS *of the year*

9

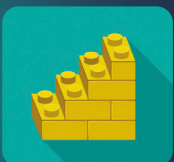
MILLION

*Given Back to the
Community*



98%

Reduction in Carbon Emissions
at Ascot Park Hotel thanks
to Boiler Conversion.



750,000
Bricks

Funded through
Lug South



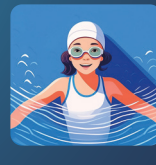
110,000

*Barista
Coffees
Made*



2,365

*Cheese
Rolls
Served*



40,113

*Pool
Admissions*
With the Learn to
Swim Programme



543

Kilometers
Covered by Team ILT
during the 2024
Surf to City



100%

*Community
Owned*



3136

Hours
Of Employee Training
and Development

SUPPORTING *Our Community*



Arts & Culture

6%



Community Facilities

18%



Education

21%



Recreation

5%



Wellbeing

15%



Sports

35%

ILT FOUNDATION *Update*

Set up by ILT in 2006, the foundation's key purpose is to re-distribute community funding generated through the 153 gaming machines in 9 ILT Venues to benefit the City of Invercargill and its residents.

In 18 years of operation, the ILT Foundation (ILTF) has redistributed almost \$99 million in grants to the local community.

Grants returned to the community for the year ended 31 March 2024 totalled **\$5,838,939**.

ILT Foundation continues to focus on ensuring the greatest level of funding is returned to the community through a prudent operational structure and careful cost management.

The recent employment of a Grants Manager to offer further in-person support to our applicants through the application and accountability processes has added a layer to the commitment to maximise returns to the community from operations.

ILTF remains committed to managing a socially responsible gaming operation with gambling harm awareness and harm minimisation a priority focus.

Training is a key focus along with keeping up-to-date with new technologies available to integrate into our venues to assist with our commitment of care to keep players safe.



Lisa-Maree Fleck
Manager, ILT Foundation

For more information about the ILT Foundation, please visit :

www.iltfoundation.org.nz

GROUP FINANCIAL *Performance*

FOR THE YEAR ENDED 31 MARCH 2024

The consolidated group consists of:

- Invercargill Licensing Trust (ILT)
- ILT Foundation
- The equity accounted value of ILT's investment in DB South Island Brewery Ltd.

The ILT Group achieved a surplus, before donations and tax, of \$12.751 million for the year to 31 March 2024. The Group continued to provide a high level of donations totalling \$9.116 million to local community organisations.

ILT (GROUP) NET SURPLUS AFTER DONATIONS AND TAX

	2024 \$	2023 \$
Invercargill Licensing Trust (Parent less inter-trust transactions)	6,683,000	6,125,000
Change in Value of Associate Company	751,000	(323,000)
ILT Foundation	5,317,000	5,587,000
Less Disposal of Property, Plant & Equipment	(64,000)	(181,000)
Consolidated (Group) Surplus before Donations and Tax	12,687,000	11,208,000
Less Donations	(9,116,000)	(8,379,000)
Less Taxation	(11,404,000)	(1,241,000)
Net Surplus (Deficit) for the year	(7,833,000)	1,588,000

OVERVIEW

- ILT recorded a higher level of profit before donations and tax of \$6.683 million as compared to \$6.125 million in 2023.

- Value of Associated Company: The value of the Trust's investment in DB South Island Brewery Ltd increased by \$751,000 (compared to a \$323,000 decrease recorded last year).

- The ILT Foundation recorded a surplus totalling \$5.317 million (funds available for redistribution), this was down from \$5.587 million last year.

- The level of grants made to the community for the year totalled \$9.116 million compared to \$8.379 million last year.

- ILT's Tax Expense for the year ended 31 March 2024 is \$11.404 million. This is made up of Income Tax Payable of \$1.058 million and a Change in Deferred Income Tax of \$10.346 million.

- This Change in Deferred Income Tax is a result of the Government enacting legislation on 28 March 2024 that changes the Depreciation for Commercial Buildings, with a useful life of 50 years or more, to a depreciation rate of 0% for the financial year starting 1 April 2024. This change in legislation will impact every business that owns commercial buildings in the country.

- For comparison, the Tax Expense for 2023 was \$1.241 million. This was made up of Income Tax Payable of \$1.633 million and a Change in Deferred Tax of a Credit of \$392,000.

INVERCARGILL LICENSING TRUST (PARENT)

Financial Performance

ILT Parent loss after donations and taxation for the year was \$8.062 million. This loss includes tax of \$1.058 million with a deferred taxation expense of \$10.346 million.

Total sales and income for the year were \$113.919 million as compared to \$110.231 million the previous year.

The Gross Profit for this year at \$48.183 million is \$3.004 million higher than last year at \$45.179 million.

Operating expenses this year are at \$43.375 million which is \$1.591 million higher than last year at \$41.784 million. This is mainly due to the higher depreciation to The Langlands of \$0.970 million, increase in employment expenses of \$1.452 million and an increase



in fuel/power/other operating expenses of \$0.959 million.

For the financial year ending 31 March 2023, there was an impairment of \$1.809 million for The Langlands. No impairment was made for the financial year ending 31 March 2024.

Investment income this year is \$451,000 compared to \$348,000 last year, an increase of \$103,000.

Donations for the year was \$3.277 million compared to \$2.510 million the previous year.

Financial Strength

The Trust's financial position remains very strong with a low level of term debt of \$8.648 million and a total asset base of \$85.130 million.

- Equity has decreased by \$8.062 million to a total of \$64.275 million.

- Grants of \$3.277 million were allocated, higher than last year's total of \$2.510 million, an increase of \$767,000.

Te Unua Museum *of Southland*



Excitement is building as the new Te Unua Museum of Southland begins to take shape. With the iconic pyramid now part of history, attention turns to the construction of the contemporary space that will share Southland's taonga and stories for generations to come.

ILT has a proud history of supporting key facilities and landmarks in Invercargill, and this significant community project is no exception. ILT Group kick started the museum's funding with a \$500,000 commitment, and despite challenging operational conditions, the board approved an additional \$500,000 this financial year.

This \$1 million investment illustrates ILT's support of Te Unua, part of Invercargill City Council's Project 1225, aptly named to reflect the museum's base rebuild deadline of December 2025.

The project also includes the Te Pātaka Taoka Southern Regional Collections Facility, completed in December 2023, and the newly opened Te Moutere Tuatara Island in Queens Park, which welcomed its first visitors in June. Members of the public can look forward to the museum's opening in the second half of 2026 once the fit-out is complete.

Recently released design plans reveal more details about this exciting new development for Southland. Te Unua Museum of Southland Director Eloise Wallace said the design showed a contemporary facility set to revitalise Invercargill's cultural offering and provide a world-class museum experience for locals and tourists.

"The developed design is one that we can see Southlanders really connecting with, it fits beautifully into the landscape of Queens Park and is the modern, revitalised and impressive facility we set out to create."

The name Te Unua, bestowed by Waihōpai Rūnaka, captures the spirit and heritage of the area, ensuring the museum will be a source of pride and inspiration



"This \$1 million investment illustrates ILT's support of Te Unua, part of Invercargill City Council's Project 1225, aptly named to reflect the museum's base rebuild deadline of December 2025."

for generations to come. The design has been guided by a cultural compass, incorporates Southland's natural features and reflects the region's waterways.

ILT chair Paddy O'Brien shares the community's enthusiasm for this project, saying, "It will be a tremendous asset for our community and we can't wait to see it all come together."



Growing a Love *for Music*



Three years ago, four pupils at New River Primary School showed an interest in learning the ukulele. Little did they know at the time what they had just sparked.

Although their teacher Paula O'Neill was not particularly musically inclined, she launched a basic ukulele programme to satisfy their budding interest.

The following year, as these initial students continued their musical journey, interest began to spread, including with the students' parents. Under the guidance of their dedicated teachers around 60 students have now embraced the ukulele.

This growing passion for music extended beyond the ukulele when one student, eager to advance, taught himself guitar. This inspired others to explore guitar as well. However, the school faced a challenge as they didn't

have the guitars available to cater to the growing interest.

Their teacher Rebecca Jordan was determined to find a solution and reached out to ILT for a grant. ILT's board enthusiastically agreed, providing funding to purchase 14 smaller guitars, more suitable for young children's needs.

Miss Jordan expressed her delight with the new equipment, saying, "I'm all about giving our kids opportunities, and with the help of ILT, we can reach so many more things."

ILT board member Suzanne Prentice, a musical icon, visited the school to see the impact firsthand. She was pleased by the positive influence of music on the students' lives. "It is great to see these kids learning at the perfect age," Prentice said. "It is wonderful to see something tangible coming from one of

our grants."

The introduction to the ukulele and guitar may well spark a lifetime love of music amongst some at New River Primary School.

Ms O'Neill noted that embracing the students' interest was about more than just music.

"On the first day they pick up a ukulele, they can't even strum. Yet within six weeks, they are playing songs".

"If they persevere, they will get it. We transfer that lesson into school to say, 'If you practice at any skill, you will achieve it and get better at it'. So, what you have learned here you can apply to maths and to reading."

Top Photo: New River Primary School
Becky Gilmore (left) and
Ellazay Pohoiwi - Campbell (right)



New River Primary School Students Lucy Andersen, Spencer Butler, Niklaus Webb, Ruby Ruffell with Suzanne Prentice

New River Primary School Students Kaitlin Black - Sutherland (left) & DJ Hughes (right)



Top Photo: Mary Ellen and Gerry

Celebrating Five Decades *of Purpose & People*

For fifty years, Recycle South has been a shining example of inclusion in our community, providing valuable employment opportunities for individuals with disabilities while contributing to the city's environmental efforts.

Their 50th anniversary this year was marked by various festivities including an awards evening that recognised the "quiet achievers" and those with "X Factor".

Recycle South general manager, Hamish McMurdo emphasises that the awards night is all about their people, many of whom may not have achieved in other places.

"They're proud to come to work, they're committed, and they should be recognised for that. Plus, they love a good party."

Previously known as Southland Disability Enterprises, Recycle South has worked tirelessly to create an environment where employees find meaningful employment, gain independence and learn essential life skills.

A great example of the opportunities available to staff is the option to complete a Supported Learning Certificate, through SIT, while they work. The course includes various topics like communication, hygiene and safety.

With around 120 employees, 80 of whom are people with disabilities, providing support is essential. Shelley Clark, the People and Capability Manager, plays a crucial role as she oversees the pastoral care and support.

Describing the team as a "big family", Shelley says, "Our commitment extends beyond the workplace. We also have a full social calendar, we arrange outings to the movies for them, hold discos and go ten pin bowling. We have a lot of fun together."

As an organisation they are future-focused and the addition of the further processing plant, means they are leading the charge in recycling agricultural waste and bale wrap.

Hamish McMurdo says people would be surprised by the scope of their operation.

"We have grown from having a staff of 8 to now having a team of over 100. But it's more than just giving people a job. We're providing our team with worthwhile employment and making them feel valued."

Paddy O'Brien, ILT president, expresses pride in being able to support Recycle South, another community minded organisation.

"They have made significant contributions to the city's environmental endeavours, but more importantly, they continue to provide employment opportunities for people with disabilities," he said.

Next time you recycle, remember the amazing individuals behind the scenes at Recycle South, whose hard work and dedication contribute to a more sustainable future. Plus, they're a fantastic bunch of people!



Matt and Mary Ellen



Gerry

"It's more than just giving people a job. We're providing our team with worthwhile employment and making them feel valued."

Investing in the *Future*



98% Reduction in Carbon
Emissions saving around

1000t of CO2 annually, thanks to
Biomass Boiler Conversion



John Faul - CH Faul



ILT Head Office



Paul Elliott - Project Manager, John Faul, Shane
Austen - CH Faul, Chris Ramsay and Paddy O'Brien

The past year has been remarkable for ILT, with several key milestones reached on our sustainability journey. One of the most significant achievements was converting the Ascot Park Hotel boiler from coal to woodchip. This conversion signalled the end of our reliance on coal and reduced the hotel's carbon emissions by 98%, saving around 1000t of CO2 annually.

But we didn't stop there. We've continued to reinvest in Ascot Park Hotel, upgrading the reception, foyer area, and guest rooms to ensure our premier conference and events centre remains top-notch.

The refurbishment of ILT's Head Office included installing solar panels for the first time in ILT's history, showcasing our commitment to improving energy efficiencies and reinvesting in our businesses.

Digital innovation was also a key focus this year and we implemented several back-office changes to boost operational efficiency and profitability. Our guests will have noticed that we also introduced Me&U (formerly known as Mr Yum) for at-table digital ordering and Volty phone charging stations across our bars and taverns to enhance service.

These efforts highlight our dedication to sustainability and innovation while maintaining returns and keeping community support front and centre. With over \$9 million given back to the community last year, we're thrilled to continue achieving our goals and making a positive impact.

over
\$9 Million
 given back to the
 community

3rd Southland Boys' Brigade Company	500
60s Up Movement	1,000
Age Concern Southland Inc	5,257
Alzheimers Society Southland Inc	1,875
Amputee Society of Otago & Southland Inc	750
Appleby Cricket Club	7,625
Arahi Maori Women's Welfare League	2,000
Arts Murihiku Charitable Trust	3,326
Ascot Community School	10,000
Association of Blind Citizens of NZ (Southland Branch)	500
Athletics Southland Inc	14,250
Aurora College	3,000
BWR Sports Club	1,200
Bowls Southland Inc	13,802
Camp Quality New Zealand	1,913
Cancer Society of NZ - Otago & Southland Division Inc	23,000
Cardiac Club of Southland Inc	840
Catholic Womens League - St Patrick's Branch	2,500
Chamber of Commerce Southland Inc	10,323
Chatbus South Trust	5,000
Christian Mission Fellowship International New River	3,500
CHROMA: The LGBTQ+ Initiative for Southland	7,000
City of Invercargill Highland Pipe Band Inc	15,000
Club Southland Inc	1,000
Community Foundations of NZ Inc	50,000
Cycling Southland Inc	22,595
Dan Davin Literary Foundation	9,000
Diabetes New Zealand	750
Disc Golf South Inc	2,500
Eastern Appleby Orphans	1,150
Eastern Suburbs Rebels Pool Team	750
Foveaux Harmony Chorus Inc	1,500
Foveaux Toastmasters Club	500
Georgetown Bowling Club Inc	500
Georgetown Scout Group	535
Glen 560 All Sports Club	1,500
Golf Southland Inc	2,263
Graeme Dingle Foundation Southern	5,000
Grey Power Southland Association Inc	7,500
Hearing Association Southland Branch	12,000
Heritage South Trust	2,500
Hiringa Oranga o Awarua Ltd (Awarua Whanau Service)	5,000
Hockey Southland Inc	15,375
Hospice Southland Charitable Trust	30,122
Inclusive Activity Murihiku Charitable Trust	5,000
Inner Wheel Invercargill	1,674
Insert Coin To Play Charitable Trust	5,000
Invercargill Bowling Club	700
Invercargill City Charitable Trust Board	6,207
Invercargill City Council - Project 1225 Museum Redevelopment	500,000
Invercargill City Council - 2024 Schools Swimming Programme	20,000
Invercargill Community Connections Charitable Trust	3,103
Invercargill Garrison Band Inc	15,000
Invercargill Gymnastic Club Inc	15,000
Invercargill Hockey Association Inc	6,000
Invercargill Irish Society	10,000
Invercargill Masonic Historical Building Charitable Trust	5,000
Invercargill Musical Theatre Inc	22,500
Invercargill Netball Centre Inc	5,000
Invercargill Northend Bowling Club Inc	5,000
Invercargill Old Boys' Cricket Club	1,875
Invercargill Primary Principals' Association	2,800
Invercargill Primary School Educational Initiatives Trust - Enrich@ilt	160,624
Invercargill Repertory Society Inc	9,375
Invercargill Rock 'n' Roll Club Inc	14,109
Invercargill Rugby Football Club Inc	13,412

Invercargill Secondary Schools' Network Trust	37,500
Invercargill Southland Chess Club Inc	3,000
Invercargill Sunrise Rotary Club	3,075
Invercargill Symphonia Inc	3,750
Invercargill Tap Dancing Association	6,000
Invercargill Truck Show & Parade	4,176
Invercargill Working Men's Club	3,500
Iron Pigs Cricket Club	2,000
James Hargest College	8,259
Jubilee Budget Advisory Service Ltd	5,000
Jubilee SuperGrans Ltd	2,000
Learning Differences Aotearoa Trust	3,000
Lighthouse Southland Inc	3,750
LUG South	3,750
Marching Southland Association Inc	2,500
Marist Brothers Old Boys' Rugby Football Club	11,035
Marist Cricket Club	1,500
Middle School	500
Miharo Murihiku Trust	11,250
Murihiku Maori Secondary Schools Teachers' Trust	3,000
NABBA Southland	600
Netball South Zone Inc	190,500
New River Primary School	2,000
Newfield Dart Club	1,750
Northend Hockey Club	1,200
NZ Dairy Industry Awards Trust	6,000
NZ Endometriosis Foundation Charitable Trust	2,000
NZ Python User Group Inc	6,000
Old Boys' Association Football Club	5,250
Order of St John - Murihiku Area	1,500
Palataisi Tongan Childrens Trust	1,000
Pirates Old Boys' Rugby Club (Invercargill) Inc	3,000
Presbyterian Support Southland	37,210
Queens Park Golf Club Inc	8,109
Rotary Club of Invercargill East Inc	600
Royal NZ Plunket Trust	3,750
Rugby Southland Inc	307,535
Sacred Heart School	2,500
Scleroderma New Zealand Inc	1,200
Scott Richardson Memorial Trust	753
Senior Citizens Christmas Dinners	40,539
Sharks Basketball Ltd	25,017
Shooting Stars - Western FC	1,650
Sir John Kirwan Foundation	75,000
South Centre Anglican Care Trust Southland	13,125
South City Community Choir	1,200
Southern Gold Marching Team	2,000
Southern Grilles and Gasoline Vehicle Club Inc	1,500
Southern Pastel Artists	500
Southland A & P Association	1,272
Southland Art Society Inc	18,000
Southland Badminton Association Inc	159,517
Southland Blind Low Vision Bowling Club	725
Southland Boys' High School	7,194
Southland Charitable Hospital Trust	25,064
Southland Christmas Parade Charitable Trust	1,125
Southland Community Broadcasters Charitable Trust	5,000
Southland Competitions Society Inc	3,375
Southland Cricket Association Inc	25,000
Southland Darts Association Inc	15,400
Southland Deer Farmers Association	2,500
Southland Disability Enterprises Ltd (Recycle South)	10,000

Southland District Rugby Football League Inc	2,000
Southland Evergreen Softball	2,250
Southland Football Inc	36,582
Southland Foundation	75,000
Southland Girls' High School	7,035
Southland Indoor Bowls Centre Inc	3,750
Southland Indoor Leisure Centre Charitable Trust	112,500
Southland Justices of the Peace	520
Southland Kiribati Community & Youth Inc	3,000
Southland Literacy Association Inc	3,087
Southland Mathematical Association Inc	750
Southland Multiple Birth Club Inc	1,000
Southland Musicians Club Inc	5,000
Southland Nepalese Society	1,000
Southland Otago Axemens Centre Inc	2,500
Southland Regional Development Agency (Great South)	56,250
Southland Secondary Schools Principals' Association	10,500
Southland Secondary Schools Sport	15,000
Southland Softball Association Inc	11,284
Southland Tennis Association Inc	32,500
Southland Tertiary Chaplaincy Charitable Trust	1,915
Southland Triathlon and Multisport Club Inc	7,125
Southland Underwater Hockey Club	2,000
Southland Youth One Stop Shop Trust	8,150
Special Olympics New Zealand	1,455
SPELD NZ Inc	1,200
Sport Southland (Active Southland)	27,500
Squash City Invercargill Inc	5,000
Squash Southland Inc	15,000
St Andrew's Scottish Society of Southland	1,000
St Mary's Netball Club	3,750
Stadium Southland Ltd	17,862
Still Mums	5,000
Strings of Southland Charitable Trust	2,000
Stuttering Treatment and Research Trust	2,500
Swimming Southland Inc	14,250
Table Tennis New Zealand Inc	1,200
Table Tennis Southland Inc	1,800
Te Oriori Trust	5,000
Te Pukenga - NZ Institute of Skills & Technology (SIT)	120,000
Te Rourou One Aotearoa Foundation	5,000
Te Whanau Tupu Ngatahi o Aotearoa	1,900
Tertiary Education Scholarships	316,178
The CanInspire Charitable Trust	5,000
The Saints All Male Choir Charitable Trust	4,000
Tigers Sports Club NZ	2,000
Touch Southland Inc	7,500
Tuturu Charitable Trust	9,089
Volley South Inc	7,500
Waihopai Bowling Club Inc	2,213
Waihopai Playcentre	1,900
Waihopai School	2,000
Waikivi Red Pool Team	2,000
Waverley Bowling Club Inc	6,305
Waverley Kindergarten	5,000
Whanake House Charitable Trust	5,000
Youthline Southland Charitable Trust	537
Small Grants under \$500	13,800
Grants returned	(15,627)

TOTAL
\$3,275,794

ILT
 For Our Community

Able Charitable Trust (Southern Family Support)	25,000
Age Concern Southland Inc	32,685
Alzheimers Society Southland Inc	7,500
Aotearoa Jazz Education & Performance CT Trust	1,125
Aphasia NZ Charitable Trust	1,500
Aqua Health Inc	1,625
Arahi Maori Women's Welfare League	10,000
Arts Murihiku Charitable Trust	34,778
Arts Murihiku Charitable Trust - Two Scholarships	3,000
Ascot Community School	112,869
Athletics Southland Inc	68,000
Athletics Southland Inc - Scholarship	1,000
Atutui Charitable Trust	4,000
Aurora College	3,000
Barnardos New Zealand Inc	29,000
Blue Jay Marching Club	7,500
Blue Light Ventures Inc	1,568
Bowls Southland Inc	33,750
Bush Haven Native Bird Rehabilitation Trust	750
Cancer Society of NZ-Otago & Southland Division Inc	20,000
CCS Disability Action Southland Inc	9,000
Chatbus South Trust	75,000
Christian Mission Fellowship International New River	3,500
Citizens Advice Bureau Invercargill Inc	12,500
City of Invercargill Highland Pipe Band Inc	42,500
CS Art Charitable Trust	7,000
Cycling Southland Inc	62,188
Cycling Southland Inc - Two Scholarships	5,000
Deaf Lawn Bowls New Zealand	2,500
Deaf Lawn Bowls New Zealand - Two Scholarships	2,500
Demons Softball Club	4,500
Diabetes New Zealand	6,000
Disabilities Resource Centre Southland CT	9,375
Disc Golf South Inc	14,700
Disc Golf South Inc - Scholarship	2,000
Eduk8 Southland Charitable Trust	30,000
Epilepsy Association of New Zealand Inc	5,625
Eventing Southland	5,000
Gabbys Starlit Hope Charitable Trust	6,750
G-Force Cycling Performance Hub Inc	2,500
Golf Southland Inc	18,750
Graeme Dingle Foundation Southern	23,750
Grasmere Indoor Bowls Club	700
Greenacres Country Club Inc	2,250
Greenlight Innovations Ltd	3,671
Grey Power Southland Association Inc	7,500
He Tauaa Junior Rugby League Club Invercargill Inc	5,000
Heritage South Trust	2,275
Highland Miniature Horse Club	1,000
Hiringa Oranga o Awarua Ltd (Awarua Whanau Services)	20,000
Hockey Southland Inc	75,000
Hospice Southland Charitable Trust	35,000
Inclusive Activity Murihiku Charitable Trust	5,000
Indian Community Southland Inc	8,000
Insert Coin To Play Charitable Trust	28,000
Invercargill City Charitable Trust Board	9,125
Invercargill City Council - 2024 Schools Swimming Programme	162,500
Invercargill Community Patrol Charitable Trust	3,000
Invercargill Garrison Band Inc	30,700
Invercargill Golf Club Inc	2,750
Invercargill Gymnastic Club Inc	15,000
Invercargill Harness Racing Club Inc	7,500
Invercargill Hockey Association Inc	10,000
Invercargill Hockey Association Inc - Scholarship	1,200
Invercargill Indoor Bowls Sub Centre	1,250
Invercargill Intercultural Church	5,000
Invercargill Masonic Historical Building Charitable Trust	5,000
Invercargill Musical Theatre Inc	27,500
Invercargill Netball Centre Inc	55,400
Invercargill Netball Centre Inc - Scholarship	1,200
Invercargill Primary School Educ Initiatives Trust - Enrich@it	457,040
Invercargill Repertory Society Inc	10,000
Invercargill Rock n Roll Club Inc	6,000
Invercargill Rugby Football Club Inc	20,000
Invercargill Secondary Schools Network Trust (ISSN)	110,000
ISSN Tertiary Scholarships	106,500
Invercargill Symphonia Inc	3,500
Jubilee Budget Advisory Service Ltd	81,600

Jubilee SuperGrans Ltd	9,000
Ka Taoka I Tuku Iho Charitable Trust	5,000
Kenzie's Gift Charitable Trust	5,200
Kiwi Family Trust	1,500
Kiwi Harvest Limited	10,000
Learning Differences Aotearoa Trust	7,000
Lighthouse Southland Inc	16,250
Loss and Grief Support Trust Southland	25,000
LUG South	3,750
Makarewa Netball Club	3,000
Makarewa School	2,500
Marching Southland Association Inc	19,500
Miharo Murihiku Trust	35,375
Mobility Assistance Dogs Trust	5,000
Murihiku Maori Secondary Schools Teachers Trust	4,700
Murihiku Swimming Club Inc	1,200
Murihiku Swimming Club Inc - Scholarship	700
NABBA Southland	4,000
National Heart Foundation of NZ	5,500
Netball South Zone Inc	112,500
New Zealand Blind Cricket Association Inc	1,500
New Zealand Competitive Aerobics Federation Inc	1,702
New Zealand Competitive Aerobics Federation Inc Six Scholarships	12,000
New Zealand Handball Federation Inc - Scholarship	2,000
NZ Assn of Radio Transmitters Sthland Branch Inc	30,000
NZ Council of Victim Support Groups Inc	5,000
Old Boys' Association Football Club	2,250
Order of St John - Murihiku Area	26,301
Oreti Park Speedway 1998 Inc	6,000
Out of School Music Classes Invercargill	12,500
Pacific Island Advisory Charitable Trust	18,000
Parent to Parent NZ Inc	5,250
Phoenix Synchro Southland Inc - Two Scholarships	2,700
Piping and Dancing Assn NZ Inc	5,400
Pirates Old Boys Rugby Club (Invercargill) Inc	11,250
Precious Babies Southland	1,500
Presbyterian Support Southland	138,460
Queens Park Association Football Club Inc	6,000
Rangatahi Tumeke Charitable Trust	5,000
Rape and Abuse Support Centre Southland Inc	105,000
Re:Woven Therapy Charitable Trust	3,000
Richmond Playcentre	3,160
Rock Quest Charitable Trust	6,000
Ronald McDonald House Charities New Zealand Trust	5,770
Royal NZ Plunket Trust	7,500
Royal NZ SPCA Inc	20,000
Rugby Southland Inc	255,000
Samoan Congregational Christian Church Inv Trust	5,000
Shakespeare Globe Centre NZ	2,000
Shakespeare in the Park Charitable Trust	4,715
Showquest Charitable Trust	7,000
Sir John Kirwan Foundation	75,000
Smash Badminton Club	900
Southern Grilles and Gasoline Vehicle Club Inc	2,000
Southern REAP Charitable Trust	30,000
Southern Snooker and Billiards Association	7,250
Southern SouNZ Inc	1,200
Southland A & P Association	4,000
Southland Amateur Rowing Association Inc	8,500
Southland Art Society Inc	6,800
Southland Badminton Association Inc	45,000
Southland Basketball Association Inc	86,250
Southland Beneficiaries & Comm Rights Centre Inc	25,000
Southland BMX Club Inc	2,500
Southland Christmas Parade Charitable Trust	9,383
Southland Clay Target Club Inc	2,500
Southland Community Broadcasters Charitable Trust	5,000
Southland Competitions Society Inc	2,625
Southland Cricket Association Inc	125,000
Southland Darts Association Inc	1,600
Southland Darts Association Inc - Scholarship	2,500
Southland Deaf Community Inc	1,500
Southland Disability Enterprises Ltd - Recycle South	25,000

Southland District Rugby Football League Inc	38,750
Southland Filipino Society Inc	6,000
Southland Fire Service Museum Society Inc	5,000
Southland Food Bank Trust	25,000
Southland Football Inc	78,750
Southland Football Inc	10,000
Southland Girls High School - Three Scholarships	5,000
Southland Group NZ Riding for the Disabled Inc	63,500
Southland Indoor Bowls Centre Inc	22,000
Southland Indoor Leisure Centre Charitable Trust	400,000
Southland Kennel Association Inc	1,500
Southland Kiribati Community & Youth Inc	10,000
Southland Life Education Community Trust	5,000
Southland Literacy Association Inc	5,500
Southland Mangaia Club Inc	4,600
Southland Masters Badminton Club	2,000
Southland Migrant Walking Together Organisation	5,000
Southland Motorcycle Club Inc	39,124
Southland Multicultural Trust	20,000
Southland Musicians Club Inc	1,000
Southland Otago Axemans Centre Inc	2,750
Southland Power Boat Club Inc	4,000
Southland Racing Club Inc	7,500
Southland Regional Development Agency (Great South)	26,625
Southland Rodeo Association Inc	5,210
Southland Schools Pipe Band Programme Trust	50,700
Southland Science and Technology Fair Society Inc	1,500
Southland Secondary Schools Sport	11,250
Southland Society of Model Engineers Inc	1,500
Southland Softball Association Inc	30,000
Southland Sports Car Club Inc	20,000
Southland Stock Car Drivers Association Inc	9,125
Southland Tennis Association Inc	45,750
Southland Triathlon and Multisport Club Inc	8,250
Southland Triathlon and Multisport Club Inc - Scholarship	2,500
Southland Water Polo Club Inc	13,500
Southland Workers Educational Assn Inc	11,250
Southland Youth One Stop Shop Trust	25,000
Spirit Army	5,000
Sport Southland (Active Southland)	134,048
Squash City Invercargill Inc	30,000
Squash Southland Inc	40,000
Stadium Southland Ltd	4,000
Star Rugby Football Club Invercargill Inc	58,950
Strings of Southland Charitable Trust	1,765
Swimming Southland Inc	52,500
Table Tennis Southland Inc	22,000
Table Tennis Southland Inc - Scholarship	1,000
Talent Development Southland Charitable Trust	137,950
Te Kohanga Reo I Nga Hau E Wha Ingill Society Inc	5,000
Te Kohanga Reo o Murihiku	5,000
Te Oriori Trust	10,000
Te Rourou One Aotearoa Foundation	20,000
The Hawthorndale Care Village Charitable Trust	500,000
The Society of Tisbury Residents Inc	21,965
The Sustainable Coastlines Charitable Trust	2,500
The YMCA of Invercargill Inc	79,000
Tisbury School	2,073
Touch Southland Inc	40,000
Touch Southland Inc - Scholarship	2,000
Tuesday Walk Group	1,625
Tutuki Harnessing Potential Charitable Trust	10,000
Tuturu Charitable Trust	19,500
Volley South Inc	36,250
Waihopai Association Football Club Inc	6,000
Waihopai City Lions Club Inc	5,382
Waihopai Rowing Club Inc	12,050
Waihopai School	2,346
Waikiwi Highland Piping and Dancing Society	750
Waikiwi Rugby Football Club Inc	11,250
Waverley Bowling Club Inc	8,459
Whanake House Charitable Trust	10,000
Youthline Southland Charitable Trust	5,000
Grants Returned	(26,148)

TOTAL
\$5,838,939

ILT
FOUNDATION

80TH ANNIVERSARY SINCE 1944

ILT

For Our Community

03 211 3640 | ilt@ilt.co.nz
PO Box 208, Invercargill 9840, New Zealand
www.ilt.co.nz

ILT

FOUNDATION

03 211 3750 | info@iltfoundation.co.nz
PO Box 1771, Invercargill 9840, New Zealand
www.iltfoundation.org.nz

