



ILT
2022 in review

Celebrating
200
MILLION
*given back to
our community*





From the Board Chair and Chief Executive



Alan Dennis



Angela Newell



Paddy O'Brien



Sean Bellew



Suzanne Prentice



Louise Evans



Jason McKenzie



Chris Ward

It is our pleasure to present the ILT (Group) 2022 Year in Review.

COVID-19 has continued to impact all aspects of our organisation over the last year. The Omicron variant in particular has been far more difficult to navigate than previous variants, most noticeably because the level of government support provided to offset the restrictions imposed on our industry has been comparably weaker.

Despite these significant challenges our unique social enterprise model has been maintained, enabling us to continue to support the community of Invercargill. One highlight we're particularly proud of is reaching the incredible milestone of 200 million dollars returned through grants and donations.

Our very purpose is for our community and we're immensely pleased to share this achievement with our great city. The continued support we have once again received is always appreciated, but even more so during these remarkable and challenging times.

We look forward to sharing the next milestone of The Langlands opening, and some great southern hospitality from our team, in the coming months.

Note from the Chair

Faced with significant challenges and financial results that have been notably tainted by Covid-19, it is encouraging to reach our latest funding milestone of \$200 million back to Invercargill. This achievement would not be possible without the enthusiasm and commitment of the 600 strong ILT team.

The resilience of our entire organisation has been tested more than ever this year. That we have not only survived, but are now beginning to thrive again, is testament to the commitment and excellence from every member of our ILT family.

Every person across our organisation, both past and present, has played a vital role in accomplishing this milestone of \$200 million in Donations. We are very grateful for the commitment you have shown to ILT and the community that we serve. Ka pai tō mahi/thank you for all of your hard work!

Alan Dennis
ILT Chair

Chris Ramsay
ILT Chief Executive

The ILT Board comprises:

Alan Dennis (President), Angela Newell (Deputy President), Paddy O'Brien, Sean Bellew, Suzanne Prentice and Louise Evans.

The Trustees of the ILT Foundation are:

Alan Dennis (Chair), Angela Newell, Paddy O'Brien, Sean Bellew, Suzanne Prentice, Louise Evans, Jason McKenzie and Chris Ward.

ILT EXECUTIVE MANAGEMENT TEAM

Bharat Guha
Chief Financial Officer

Chris Ramsay
Chief Executive

Nikki Buckley
Corporate Sales
Executive


Angee Shand
Marketing &
Innovation
Executive

Terry Laidlaw
Operations
Executive




900+
CHRISTMAS
GIFTS delivered to
our older residents

15,224
OYSTERS
served




Over **\$6.8** million
given back to the community

1 TANDEM
BIKE
ridden around
Queens Park
to support
the Cancer
Society



837 ATHLETES
supported
at the
Colgate Games





Welcome to our new CFO

Warm Welcome to Bharat Guha

We are pleased to welcome our new CFO Bharat Guha. Bharat joined the team in late 2021, coming from Southern Lakes English Language School where he was CEO. Bharat has a strong connection to the Southland community through his 20 years at the Southern Institute of Technology (SIT) as Deputy CE Corporate/CFO. In this role, he was one of the architects of the SIT Zero Fees scheme.

Bharat has a passion and commitment for Invercargill, and we look forward to him bringing his excellent strategic and commercial acumen to our organisation.



and a fond farewell...

Farewell to Neil Affleck

At the end of 2021, we bid farewell to Neil Affleck our Chief Financial Officer (CFO).

Neil had a remarkable career with ILT, spanning over four decades. He has been involved with many significant developments over this time. This includes the renovation of several establishments, providing financial expertise to the scoping and building of The Langlands and being a major part of the \$200 Million we have given back to the community in grants and donations. He is a stalwart of our organisation and a regular contributor to the community in many other ways too. We wish him all the best for the next chapter.

Artists' collaboration outside the site of The Langlands



Financial performance *in Brief*

Covid has once again challenged our ability to operate at full capacity. The disruption to the financial year ended up being a lot worse than the year prior, as a variety of Government enforced rules and restrictions were applied across our businesses that negatively impacted trade.

This flowed through in to our overall group performance. Although sales were higher by \$3.78 m or 4.5% in comparison to the year prior, the final pre-tax profit result for the year was \$4.79 m, \$2.5 million down from the previous financial year.

This was driven by two key factors;

- 1 Government enforced lockdown and subsequent rules and restrictions that were very prohibitive for the hospitality industry, which negatively affected 8 months of the financial year.
- 2 Limited financial support from Government in comparison to

the year prior, even though Covid restrictions were more onerous and longer lasting than the year prior.

We were not able to apply the same level of Covid-19 mitigation measures as we had done in the previous year. This was due to a combination of reasons, not least of which was ensuring we didn't restrict Donations any further than we had previously.

Once lockdown hit in August we again implemented a values based approach, ensuring our number one priority was to guarantee and protect the income of our 600 strong ILT family, and communicating this as quickly as possible. We know the certainty that this provided was appreciated by all our staff during such an unsettling time.

The Langlands build has continued. The reduced interest income and the addition of mortgage interest payments that this major development has created were forecast, although it is

important to note the impact these areas have also had on our profit result.

Despite the ongoing effects of the global pandemic, during this year we have returned over \$6.8 million back to the community. This is a pleasing result as, even in this most challenging of years, it is an increase on the year prior and tangible evidence of our commitment to grow donations back to pre-Covid levels as quickly and sustainably as we can.

Board, Executive and Management continue to do everything they can to manage the impact of the changing alert levels and restrictions, to maintain a strong level of community funding.

Our forecast for the coming year is cautious, however with The Langlands due to open soon and our other businesses trading close to pre-Covid levels we remain cautiously optimistic that the more recent positive sales trend will continue through the year ahead.

**Please note once the audit process is completed our group financial performance for the year ended 31 March 2022 will be available.*

ILT FOUNDATION

ILT Foundation's key purpose is to distribute grants generated through the gaming machines, located within nine ILT venues, to benefit the city of Invercargill and its residents.

In the 15 years of operation, the ILT Foundation has returned over \$87 million in grants to a variety of non-profit organisations and charitable trusts including health and welfare agencies, education, arts and amateur sports.

Grants returned to the community for the year ended 31 March 2022 totalled \$4,726,950.

A lean organisational structure provides the platform to minimise operational costs to maximize returns to the community.

Capital expenditure has been heavily reduced due to Covid.

ILT Foundation has always recognised gaming as a sensitive product, acutely aware of the social responsibilities.

Gambling harm awareness and harm minimisation remain priority focuses for ILT Foundation.

We proactively seek out information on resources and research on new technologies available that could be integrated into venues to assist us and our venues with our commitment of care to keep players safe.

Lisa-Maree Fleck
Manager ILT Foundation



**For more information
on the ILT Foundation
visit**

www.iltfoundation.org.nz

*Saving lives
in our community*

OTAGO RESCUE HELICOPTER TRUST



If you've looked up recently, you may have seen the Otago Rescue Helicopters en route to Southland Hospital.

The team have been making this lifesaving helicopter journey since 1991, covering everywhere from Oamaru through to Stewart Island and the sub Antarctic Islands.

Their scope includes accident and medical emergencies, inter-hospital retrievals as well as a small number of search and research operations. This service connects people to the best possible care, transferring patients to Dunedin and Christchurch for specialist treatment.

It's not a service you envisage needing yourself, but that's exactly what happened to our board member Suzanne Prentice. Months after learning more about the Otago Rescue Helicopter Trust, through their successful funding application process, she required their services. She suffered a heart attack and was airlifted to Dunedin Hospital for emergency care.

"I never imagined I'd need their services. They do an incredible job and I'm so grateful for their help," said Suzanne.

"I have no doubt they have saved many lives over the years and I'm delighted

ILT is able to support this highly skilled team that goes above and beyond."

The service is on call 24/7, ready to respond to serious emergencies across a vast and challenging geographical region.

Martin Dippie, chair of the Otago Rescue Helicopter Trust, said the Trust is grateful to the funders for their support.

"It will go towards purchasing new equipment that will further enhance the stunning rescue helicopter service that covers the Otago and Southland region," said Martin.

With Southland now accounting for 30% of all completed missions, this service is undoubtedly essential for the community of Invercargill. ILT Foundation, along with local funders Community Trust South and Aotearoa Gaming Trust granted funding that will go towards equipment and ongoing operational costs.

"We rely on community funding to support the ongoing operation of the service and to assist with purchases of high-tech equipment and development of IFR (instrument flight rules) routes," Dippie said.

"Some of the current funding will be utilised to replace and upgrade the night vision goggles. These were a world-first for rescue helicopters when introduced here and have enabled many more patients to be rescued – saving many lives across the lower South."





The Langlands update

Left: Trudy Burdon, artist, signing her work.

The story so far...

From its inception, The Langlands has been designed to be more than just a hotel. It has been developed with the community in mind, with bespoke areas that are easily accessible to locals and visitors alike. The five eateries and bars will add vibrancy to our inner city and have plenty of local flavours.

And, when the doors open in August 2022 you'll get the chance to see the local connections and experience The Langlands in Waihopai.

At Brew'd cafe you'll be able to enjoy a bespoke coffee blend created by local company, Mint Roastery. It doesn't come any fresher than Farm Fresh Milk based in nearby Woodlands, who will be supplying Brew'd with their milk on tap.



The Langlands reception area

Classic room



Several local graphic designers have added their own creative flair and style, to create individual brand identities for each of the different food outlets. Invercargill based artist Trudy Burdon's pieces, inspired by the importance of connection and community, adorn the walls of the rooms. Neatly framed by local business Cameo Framers

The beautiful interior has been carefully curated by local designer Lynn Gray, finishing touches in the rooms include Ohope NZ made woollen throws and toiletries from Still Botanics.

The Langlands story is one of collaboration from design and demolition through to the build. Its opening will be the culmination of many years of hard work for ILT, Leigh's and their contractors. But, ultimately, it wouldn't be anything without our amazing team, who can't wait to share some of their famous hospitality with you soon.



Mint Roastery and the ILT team working on Brew'd blend



Shining a light on scholarships

ILT Scholarship recipient Madison Flannery has her sights set on improving the country's human rights.

Madison Flannery has always had a passion for helping people, she has even dedicated her studies to it. She is in her second year of a Bachelor of Laws and a Bachelor of Arts (majoring in Development Studies and International Relations).

Outside of the classroom, Madison has taken the opportunity to get involved in the wider law community through the school's Human Rights Justice Committee which helps refugee families get resettled in New Zealand. Madison relishes the opportunity to help people in need and learn from older law students at the same time.

"Overall, I am just loving my time at Victoria University. I have grown so much as a student but also as a person," Madison said.

"I am so grateful for your support, the scholarship has been a massive help in my journey and has allowed me to follow my dreams."

"I am very lucky to come from such a wonderful place as Invercargill where teams like the ILT support young people like me. Thank you so much."



The eyes and ears of the inner city –

INVERCARGILL COMMUNITY PATROL

You may have seen the Invercargill Community Patrol (InCP) car cruising the streets of Invercargill during the weekends.

This group of volunteers dedicate their Friday and Saturday nights to helping build safer communities. They work closely with the Invercargill Police and provide observational support, effectively acting as an extra set of eyes and ears on the streets.

InCP is made up of 17 committed individuals that come from all walks of life, just like the people they look out for. One thing this group of volunteers all have in common is their desire to help the community.

The longest-serving member Graham Jordan, or Mr J as he's affectionately known, is a retired school caretaker and sports coordinator who loves seeing his former students.

"Being able to say hello and connect with them is really rewarding. I love doing something for the community and helping make everyone feel safer," he said.

Local funding is vital for this group as they receive no national funding. ILT and Community Trust have come together to fund the purchase of the new car. Local companies Rothbury Insurance Brokers cover car insurance and HW Richardson, through their company Allied Petroleum, cover the ongoing fuel costs.



InCP president, Brian Dunick said former secretary and treasurer of InCP, Andrew King was a key driver behind the fundraising effort.

"Like many volunteer groups, we rely on community funding to be able to provide our patrol service. Without the help of community funders such as ILT this wouldn't be possible," Mr Dunick said.

The new patrol car bears a striking resemblance to the NZ Police Patrol cars, with similar yellow and blue colouring. This signwriting is standard across the Community Patrol's National network and helps ensure the car is easily identifiable to the public.

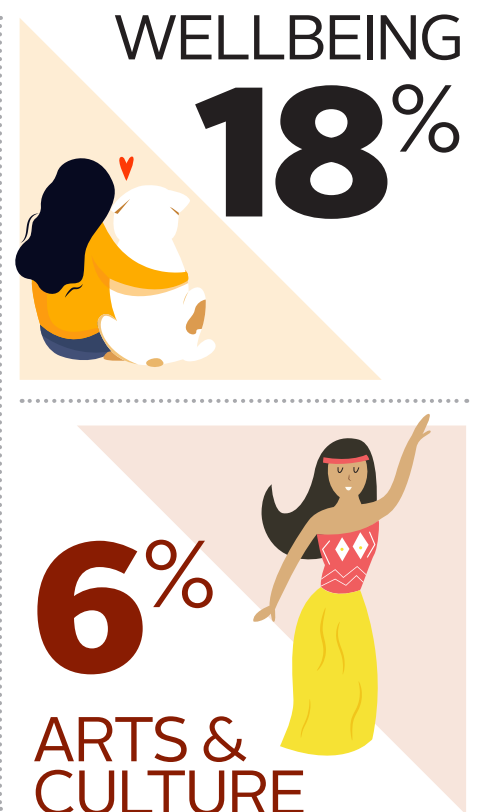
On an average night, a patrol covers 80km, which is over 4100 km annually so it's essential to have a safe and reliable car. The new vehicle means the volunteers can continue to monitor the streets and provide much needed assistance to the Invercargill Police force.



Reuben Boniface, Police Liaison Officer and Brian Dunick, InCP President.

Supporting our community

ILT and ILT Foundation Grants by Category 2021/2022





Over \$6.8 million to the community

\$

Admin Professionals Celebrations Committee	3,500
Alzheimers Society Southland Inc	1,875
Amputee Society of Otago & Southland Inc	750
Ascot Darts Team	757
Association of Blind Citizens of NZ (Southland Branch)	500
Athletics Southland Inc	19,250
Aurora College	3,000
Bowls Southland Inc	12,750
Cancer Society of NZ – Otago & Southland Division Inc	12,000
Chamber Music NZ Trust	9,000
CHROMA: The LGBTQI+ Initiative for Southland	8,000
City of Invercargill Highland Pipe Band Inc	15,330
Collaborative Therapy & Development Trust	25,000
Collegiate Netball Club	1,125
Cowboys Rugby League Club	1,500
Cycling Southland Inc	22,500
Dan Davin Literary Foundation	4,500
Diabetes New Zealand	750
Disc Golf South Inc	1,875
Eastern Suburbs Rebels Pool Team	750
Foveaux Harmony Chorus Inc	1,500
Georgetown Bowling Club Inc	1,300
Glen 560 All Sports Club	1,500
Golf Southland Inc	1,350
Graeme Dingle Foundation Southland	2,250
Grey Power Southland Association Inc	7,500
Hearing Association Southland Branch	6,000
Hockey Southland Inc	15,750
Hospice Southland Charitable Trust	30,522
ILT Dart League	600
ILT Trade Scholarships	3,111
Indian Community Southland Inc	1,500
Invercargill Bowling Club	525
Invercargill City Council	11,799
Invercargill Contract Bridge Club	1,500
Invercargill Dodgers Softball Club Inc	500
Invercargill Filipino Dance Group	750
Invercargill Gymnastic Club Inc	8,000
Invercargill Harness Racing Club Inc	614
Invercargill Hockey Association Inc	6,000
Invercargill Musical Theatre Inc	22,500
Invercargill Old Boys' Cricket Club	3,075

Invercargill Primary School Educational Initiatives Trust	167,411
Invercargill Public Art Gallery Inc	2,500
Invercargill Repertory Society Inc	9,375
Invercargill Rock 'n' Roll Club Inc	6,300
Invercargill Rugby Football Club	11,713
Invercargill Secondary Schools' Network Trust	37,500
Invercargill Southland Chess Club Inc	3,000
Invercargill Sunrise Rotary Club	1,875
Invercargill Symphonia Inc	3,750
Invercargill Tap Dancing Association	4,500
James Hargest College	5,600
Jubilee Budget Advisory Service Ltd	3,750
Jubilee SuperGrans Ltd	2,000
Learning Differences Aotearoa Trust	3,000
Lighthouse Southland Inc	3,750
Marist Brothers Old Boys' Rugby Football Club	12,750
Marist Cricket Club	1,500
Miharo Murihiku Trust	11,250
Mobility Assistance Dogs Trust	1,000
Murihiku Maori Rugby Charitable Trust	2,000
Muscular Dystrophy	1,500
Netball South Zone Inc	187,500
Northend Hockey Club	500
NZ Foundation of the Blind	750
Orphans Aid International Charitable Trust – Invercargill Event	1,800
Senior Citizens Christmas Gifts	26,485
Phoenix Synchro Southland Inc	11,250
Pirates Old Boys' Rugby Club (Invercargill) Inc	2,500
Presbyterian Support Southland	18,750
Queens Park Golf Club Inc	607
Rape and Abuse Support Centre Southland Inc	3,750
Rotary Club of Invercargill North	1,500
Royal Guards Leisure Marching Team	1,200
Royal NZ Plunket Trust	3,750
Rugby Southland Inc	350,000
Saints All Male Choir	2,250
South Centre Anglican Care Trust Southland	13,125
Southern Filmmakers Trust	5,428
Southern Institute of Technology	1,500
Southern Most Skaters	3,500
Southern Strength Powerlifting Club	4,000
Southland Amateur Rowing Association Inc	2,655

Southland Art Society Inc	18,000
Southland Badminton Association Inc	15,000
Southland Basketball Association Inc	120,000
Southland Boys' High School	1,500
Southland Chevrolet Club Inc	1,500
Southland Christmas Parade Charitable Trust	1,125
Southland Cricket Association Inc	22,500
Southland Football Inc	34,500
Southland Girls' High School	16,450
Southland Indoor Leisure Centre Charitable Trust	112,500
Southland Master Builders' Association	2,500
Southland Regional Development Agency	32,250
Southland Secondary Schools Principals' Association	10,500
Southland Secondary Schools Sport	7,500
Southland Softball Association Inc	32,293
Southland Table Tennis Association Inc	3,600
Southland Pool Club	2,000
Southland Tennis Association Inc	15,000
Southland Triathlon and Multisport Club Inc	7,125
Southland Youth One Stop Shop Trust	7,500
Sport Southland (T/A Active Southland)	28,067
Squash Southland Inc	15,000
Stadium Southland Ltd	32,837
Swimming Southland Inc	14,250
Te Rangi Bowling Club Inc	3,270
Tertiary Education Scholarships	275,479
The CanInspire Charitable Trust	3,000
The Saint Andrews Scottish Society and Burns Club of Southland	1,000
Tigers Sports Club NZ	2,625
Touch Southland Inc	7,500
Tuturu Charitable Trust	5,000
Tuurama Trust	2,009
Volleyball Southland Inc	11,500
Waikiwi Bowling Club	4,391
Waikiwi Rugby Football Club Inc	1,500
Waverley Bowling Club Inc	577
Windsor Community Church	1,520
Youthline Southland Charitable Trust	8,200
Small Grants (under \$500)	9,722
Grants returned	(11,000)

Total **ILT**
For Our Community
\$2,091,472



Able Charitable Trust (Southern Family Support)	25,000
All Saints Anglican Parish	5,000
Altrusa International of Invercargill	3,664
Alzheimers Society Southland Inc	7,500
Aotearoa Community Wellbeing Trust	2,621
Aphasia NZ Charitable Trust	1,500
Aqua Health Inc	1,575
Arts Murihiku Charitable Trust	4,400
Ascot Community School – 2022 Digital Facilitator & teaching programme (on behalf of all Invercargill Primary Schools)	151,000
Ascot Park Consortium Inc	10,000
Athletics Southland Inc	53,000
Aurora College	3,000
Autism New Zealand Inc	3,750
Awarua Whanau Services	15,000
Barnardos New Zealand Inc (Invercargill branch)	21,750
Blue Light Ventures Inc	1,425
Bluff Community Pool Trust	75,000
Bluff Oyster and Food Festival Charitable Trust	3,750
Bluff Rugby Football Club Inc	2,979
Bluff Yacht Club Inc	8,250
Bowls Southland Inc	33,750
Cancer Society of NZ – Otago & Southland Division Inc	7,500
Cardiac Club of Southland Inc	840
CCS Disability Action Southland Inc	9,000
Chamber of Commerce Southland Inc	1,125
Choirs Aotearoa New Zealand	4,500
Christian Mission Fellowship International New River Southland Trust	5,000
Citizens Advice Bureau Invercargill Inc	5,000
City of Invercargill	
Highland Pipe Band Inc	33,750
Collegiate Rugby Football Club Inc	11,250
Conductive Education	
Southern Charitable Trust	11,250
CS Art Charitable Trust	7,000
Cycling Southland Inc	116,250
Diabetes New Zealand (Southland)	6,000
Disabilities Resource Centre Southland Charitable Trust	4,601
Dunedin Civic Orchestra Inc – Invercargill School Shows	2,961
Epilepsy Association of New Zealand Inc – Southland Branch	5,625
Georgetown Piping & Dancing Society	2,000
Graeme Dingle Foundation Southland	18,750
Grasmere Indoor Bowls Club	350
Grasmere Netball Club	1,210
Grey Power Southland Association Inc	5,000
Gymsports NZ Inc	30,000
Head Injury Society of Southland Inc	7,650
Heart Kids Southland	5,000
Hockey Southland Inc	56,250
Hospice Southland Charitable Trust	26,250
Inclusive Activity Murihiku Charitable Trust	12,200
Indian Community Southland Inc	3,750
Invercargill Citizens Bowling Club Inc	3,375
Invercargill City Council – 2022 Schools Swimming Programme	149,219
Invercargill Community Patrol Charitable Trust	29,000
Invercargill Dodgers Softball Club Inc	3,750
Invercargill Golf Club Inc	2,025
Invercargill Gymnastic Club Inc	16,000
Invercargill Harness Racing Club Inc	7,500
Invercargill Hockey Association Inc	150,000
Invercargill Indoor Bowls Sub Centre	937
Invercargill Musical Theatre Inc	22,500
Invercargill Primary School Educational Initiatives Trust (enrich@ILT) – 2022 programme / move to new premises	440,426
Invercargill Public Art Gallery Inc	2,500
Invercargill Repertory Society Inc	7,500
Invercargill Rowing Club Inc	10,000
Invercargill Secondary Schools Network Trust (ISSN)	100,000
ISSN – Tertiary scholarships	100,000
Invercargill Symphonia Inc	1,250

Jubilee Budget Advisory Service Ltd	30,000
Jubilee SuperGrans Ltd – (Te Ao Puawai – Pregnancy Support)	12,000
Kalapu Maile Ua Southland	4,207
KartSport Southland Inc	12,282
Kenzie's Gift Charitable Trust	5,200
Kiwi Family Trust	1,300
Kiwi Harvest Limited	10,000
Learning Differences Aotearoa Trust	5,250
Lighthouse Southland Inc	9,375
LUG South	2,025
Makarewa School	2,000
Menz Shed Invercargill Inc	6,000
Miharo Murihiku Trust	30,000
Mobility Assistance Dogs Trust	1,000
Motorcycling New Zealand Inc – scholarship	3,000
Murihiku Maori Rugby Charitable Trust	18,125
Myross Bush Rugby Club Inc	1,400
Netball South Zone Inc	112,500
NZ Council of Victim Support Groups Inc	3,000
Order of St John	4,237
Oreti Park Speedway 1998	28,774
Otago Rescue Helicopter Trust	65,000
Otatara Community Parents Group Charitable Trust	10,000
Pacific Island Advisory Charitable Trust	15,000
Parent to Parent NZ Inc	5,250
Phoenix Hockey Club	1,316
Phoenix Synchro Southland Inc	22,500
Pirates Old Boys Rugby Club (Invercargill) Inc	11,250
Presbyterian Support Southland – Family Works	120,000
Queens Park Association Football Club	5,750
Queens Park Golf Club Inc	11,250
Rangatahi Tumeke Charitable Trust	4,000
Rape and Abuse Support Centre Southland Inc	11,250
Rata Netball Club	3,000
RMH South Island Trust	3,750
Rock Quest Charitable Trust	6,000
Royal NZ Foundation of the Blind Inc	3,750
Royal NZ Plunket Trust	7,500
Royal NZ SPCA Inc	10,000
Rugby Southland Inc	255,000
Shakespeare in the Park Charitable Trust	4,500
Southern Adventurers Guild Charitable Trust	2,500
Southern Filmmakers Trust	5,478
Southern Harness Racing Inc	10,000
Southern Institute of Technology – 2021 Trade scholarships	65,000
Southern REAP Inc	7,500
Southern Snooker and Billiards Association	2,812
Southern Sou'NZ Inc	900
Southern Steam Train Charitable Trust	80,000
Southern Strength Powerlifting Club	5,000
Southland Amateur Rowing Association Inc	6,375
Southland Art Society Inc	5,100
Southland Asthma Society Inc	9,000
Southland Astronomical Society Inc	20,000
Southland Badminton Association Inc	50,000
Southland Basketball Association Inc	71,250
Southland Beneficiaries & Community Rights Centre Inc	25,000
Southland BMX Club Inc	15,000
Southland Canoe Club Inc	5,370
Southland Chevrolet Club Inc	1,721
Southland Christmas Parade Charitable Trust	8,250
Southland Community Nursery Conservation Trust	3,750
Southland Competitions Society Inc	2,625
Southland Cricket Association Inc	101,250
Southland Deaf Community Inc	1,500
Southland Disability Enterprises Ltd (Recycle South)	18,750
Southland District Rugby Football League Inc	33,750
Southland Dog Training Club Inc	2,500
Southland Filipino Society Inc	5,000

Southland Food Bank Trust	20,000
Southland Football Inc	78,750
Southland Girls' High School – scholarship	3,000
Southland Group NZ Riding for the Disabled Inc	11,250
Southland Indoor Leisure Centre Charitable Trust	400,000
Southland Kennel Association Inc	1,500
Southland Kiribati Community & Youth Inc	1,500
Southland Life Education Community Trust	3,750
Southland Literacy Association Inc	4,500
Southland Masters Badminton Club	1,500
Southland Migrant Walking Together Organisation	8,125
Southland Motorcycle Club Inc	45,100
Southland Mountain Bike Club Inc	16,000
Southland Multicultural Trust	11,250
Southland Multiple Sclerosis Society Inc	13,125
Southland Power Boat Club Inc	3,750
Southland Racing Club Inc	7,500
Southland Regional Development Agency (Great South) – Kidzone	26,625
Southland Schools Pipe Band Programme Trust	68,025
Southland Science and Technology Fair Society Inc	1,500
Southland Social Sciences Fair	1,125
Southland Society of Model Engineers Inc	1,500
Southland Softball Association Inc	70,000
Southland Sports Car Club Inc	45,000
Southland Stock Car Drivers Association Inc	34,125
Southland Stroke Club Inc	3,750
Southland Table Tennis Association Inc	21,500
Southland Tennis Association Inc	43,500
Southland Triathlon and Multisport Club Inc – scholarship	1,200
Southland Triathlon and Multisport Club Inc	8,250
Southland Water Polo Club Inc	13,500
Southland Woodworkers Guild Inc	5,703
Southland Youth One Stop Shop Trust	18,750
Special Olympics Southland Inc	3,750
Spirit Army	3,750
Sport Southland (T/A Active Southland)	151,476
Squash Southland Inc	33,750
St Theresas School	2,500
Strings of Southland Charitable Trust	1,650
Swimming Southland Inc	52,500
Talent Development	
Southland Charitable Trust	60,750
Te Rangi Bowling Club Inc	5,000
The NZ Symphony Orchestra Foundation	5,000
The Stroke Foundation of NZ Ltd	3,622
The YMCA of Invercargill Charitable Trust	28,750
Touch Southland Inc	30,000
TSB Netball Club	5,000
Tuturu Charitable Trust	15,000
Vintage Car Club of NZ – Southland Branch Inc	12,500
Volleyball Southland Inc	26,250
Waihopai City Lions Club Inc	3,750
Waihopai School	20,500
Waikiwi Bowling Club	10,000
Waikiwi Highland Piping and Dancing Society	750
Waikiwi Rugby Football Club Inc	11,250
Waverley Bowling Club Inc	10,000
Windsor North School	2,500
Youthline Southland Charitable Trust	6,750
Grants returned	(98,031)

Total **ILT** FOUNDATION
\$4,726,950



For Our Community

03 211 3640 | ilt@ilt.co.nz

PO Box 208, Invercargill 9840, New Zealand
www.ilt.co.nz



FOUNDATION

03 211 3640 | iltfoundation@ilt.co.nz

PO Box 1771, Invercargill 9840, New Zealand
www.iltfoundation.org.nz