



annual ²⁰¹⁸ report

INVERCARGILL LICENSING TRUST
& ILT FOUNDATION



Invercargill Licensing Trust

Your City. Your Trust.

ANNUAL GENERAL MEETING
TO BE HELD AT ELMWOOD GARDEN
TUESDAY 28 AUGUST 2018 AT 7.30PM



From the **BOARD CHAIR & CHIEF EXECUTIVE**

CHRIS RAMSAY
Chief Executive Officer

ALAN DENNIS
President

It is our pleasure to present the Invercargill Licensing Trust (Group) Annual Report for the financial year ended 31 March 2018.

Invercargill Licensing Trust

Your City. Your Trust.

The Invercargill Licensing Trust belongs to you, the people of Invercargill. This concept of community ownership is both the Trust's uniqueness and its reason for being - with direct accountability back to its owners, the residents of our city. More than ever, there is an increasing appreciation around the globe for the benefits community organisations such as ours deliver.

Our Vision: For Invercargill to grow and develop into the best place to live, work and play.

Our Mission: To operate the best quality hospitality businesses, making it possible for us to return significant benefits to the people of Invercargill.

Legacy It's not a word which sits comfortably with Greg Mulvey but after 40 years dedicated to our Trust, he undoubtedly left one behind when he retired in March this year.

General Manager of the Trust since 1987, Greg's leadership era will be etched into our history books as one of success during a time of major societal change and, at times, economic turbulence.

Our commercial operations thrived under his astute management, enabling unrivalled funding contributions to our community totalling a staggering \$171,526,765.

The Trust's youngest ever General Manager when appointed at just 34 years old, Greg's induction into the Hospitality New Zealand Hall of Fame last year was a worthy accolade for his tireless commitment.

Results such as those you are about to read in the subsequent pages of this annual report don't merely happen. It takes sheer hard work from a loyal and talented team. Greg's significant influence certainly set a standard we will continually strive to uphold into the future.



557
Grants



328
Scholarships



39,915
Sponsored Swimming
Lessons
(refer pg 7)

\$8.3 MILLION

returned in
grants to our
community



ILT Executive Management Team

Greg McElhinney (Operations Manager), Angee Shand (Marketing & Sales Manager), Chris Ramsay (Chief Executive Officer),
Nikki Buckley (Events & Corporate Sales Manager), Neil Affleck (Financial Controller), Terry Laidlaw (Purchasing & Off Premise Manager)

Group Financial PERFORMANCE

for the year ended 31 March 2018

The consolidated group consists of:

- Invercargill Licensing Trust
- ILT Foundation
- The equity accounted value of the Invercargill Licensing Trust's investment in DB South Island Brewery Ltd.

The ILT Group achieved a surplus after tax, before grants, for the year of \$9,949 million. This satisfactory result enabled the Invercargill Licensing Trust and ILT Foundation to provide a high level of grants totalling \$8.318 million to a vast array of local community organisations.

ILT (GROUP) NET AFTER-TAX PROFIT

	2018 (\$)	2017 (\$)
Invercargill Licensing Trust (Parent)	4,931,000	5,480,000
Change in Value of Associate Company	(30,000)	36,000
ILT Foundation	5,048,000	4,628,000
Consolidated (Group) Surplus after Tax	9,949,000	10,144,000
Less Grants Allocated	(8,318,000)	(8,750,000)
Net Surplus for the year	1,631,000	1,394,000

OVERVIEW

- The Invercargill Licensing Trust produced a net surplus after tax, before the allocation of grants, of \$4.931 million. This was lower than last year's \$5.48 million surplus due to a higher than normal level of Project Repairs and Maintenance costs incurred in the 2018 year.
- Value of Associated Company: The value of the Trust's investment in DB South Island Brewery Ltd decreased by \$30,000 (compared to a \$36,000 increase recorded last year) due primarily to the timing of profit distributions which affects the net tangible asset value included in the Group financial statements.
- The ILT Foundation achieved an increase in surplus to a total of \$5.048 million (up from \$4.628 million) due to a small increase in revenue and continued good control of operating expenses.
- The level of grants made to the community for the year totalled \$8.318 million compared to \$8.75 million last year.

INVERCARGILL LICENSING TRUST (PARENT) FINANCIAL PERFORMANCE

The Invercargill Licensing Trust's pre-tax operating surplus, before grants, is \$6.482 million. This is lower than last year's \$7.601 million due to a higher level of Project Repairs and Maintenance costs being expensed during the year. Most of this expenditure resulted from the continuing refurbishment of our hotel and motel accommodation rooms along with a special project this year to repair the west wall of the Kelvin Hotel building.

After excluding these additional maintenance costs and other extraordinary items from both year's results the underlying pre-tax surpluses are \$7.875 million in 2018 and \$7.742 million in 2017 – an increase of \$133,000 or 1.7%. The main factors contributing to this increase were:

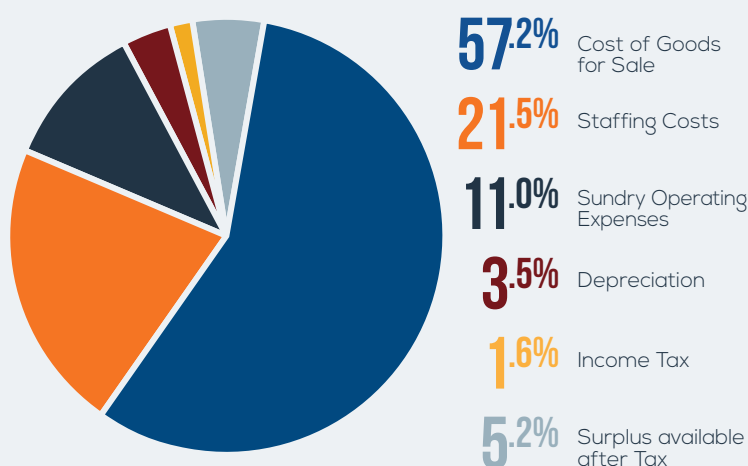
- Total sales for the year were \$91.1 million – an increase of \$2.562 million or 2.9%. Our bar, restaurant and accommodation sales increased by a modest \$163,000 or 0.5% and our bottle store/liquor distribution sales increased by \$2,399,000 or 4.4%.
- Total operating expenses increased by \$481,000 or 1.5%, a good result for the year given the overall increase in sales activity and the continuing inflationary increases in expenditure.
- The combined trading profit, before tax, from our various businesses increased by \$287,000 or 5%. A full 12 month's operation of the new Waikiwi Tavern/Foundry Restaurant business, that opened in November 2016, made a good contribution towards this increased result.
- Our investment income reduced by \$154,000 or 7.5% due to lower interest rates being received on our maturing and reinvested funds during the year.
- Grants of \$3.247 million were allocated, slightly lower than the \$3.67 million distributed the previous year.

FINANCIAL STRENGTH

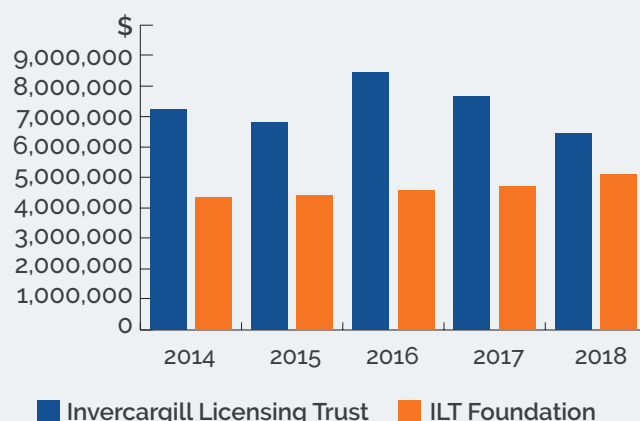
The Trust's financial position remains very strong with a low level of term debt and total assets of \$97.5 million, compared to \$94.7 million last year. This includes significant cash reserves available for future development projects which will ultimately benefit our community.

- Equity has increased by \$1.9 million to a total of \$80.5 million.
- Equity represents 82.5% of total assets.

How each dollar of Invercargill Licensing Trust income is distributed



Operating profit over the last 5 years (before deducting Taxation and Grants)



Investing in the FUTURE

Our long-standing strategy to reinvest significant levels of capital into our existing portfolio saw a variety of renovation and maintenance projects undertaken at our establishments during the year. The more significant projects included:

WAXY'S IRISH PUB

Slainte! Whilst maintaining key features like the roaring open fire, a \$400,000 rejuvenation of our Irish bar – its first extensive revamp since opening in 2001 – has proved popular with patrons. The recent addition of a Pool Room to the north has added even further appeal to this inner-city establishment.

ASCOT PARK HOTEL

Invercargill's premier hotel continues to exceed expectations in the hospitality industry following extensive makeovers to all 26 rooms located in the east wing. It's the first phase of a \$2.1 million investment which will ultimately see 56 rooms transformed into a contemporary space with a luxurious feel.



WINDSOR WINES

Demand prompted the creation of a larger Tasting Room at Windsor Wines to cater for the increased interest our Tuesday night tastings were generating. This dedicated space has been tailor-made to ensure both suppliers and our own wine connoisseur Stephane Fabre have an ideal setting to showcase quality product.

ILT FOUNDATION

The ILT Foundation, now in its 12th year of operation, was set up in 2006 by the Invercargill Licensing Trust.

Owning and operating 163 gaming machines within 10 Invercargill Licensing Trust establishments, the ILT Foundation's key purpose is to distribute grants generated from gaming machines to benefit the community of Invercargill.

\$60 million has been redistributed across our community, to a variety of non-profit organisations, charities, welfare agencies, educational and arts organisations and amateur sports over the past 12 years.

The ILT Foundation's model has a lean organisational structure and is designed to be responsive to our community, to ensure the greatest level of grants are returned to our community.

The ILT Foundation recognises gaming as a sensitive product, is very aware of the social responsibility and is committed to providing safe and enjoyable gaming venues. The ILT Foundation works together with the ILT venues to ensure gambling harm is minimised.

The ILT Foundation continues to be one of the highest performing gaming trusts in New Zealand with regard to grants returned to the community and our proactive approach to operating safe venues.

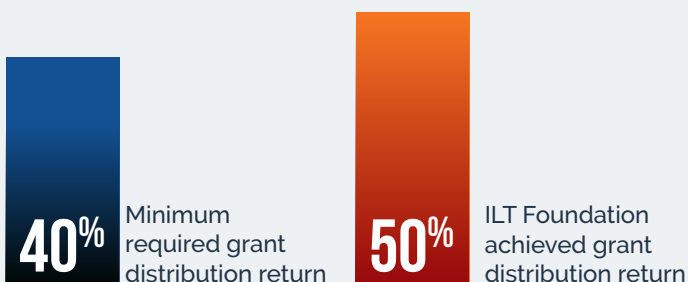
In addition to grant funding, the ILT Foundation has an extensive scholarship programme. The scholarships available include Arts/Cultural, NZ representative scholarships, as well as a number of tertiary and trade scholarships.

- Total grants allocated for the year were \$5,070 million, previous year \$5,082 million.
- Revenue was \$10,173 million – previous year \$9,599 million.
- The Trustees of the ILT Foundation continue to have a strong focus on community benefit.



Lisa-Maree Fleck
Manager
ILT Foundation

Grant Distribution Return To Community for year ending 31st March 2018



For more information on the ILT Foundation, visit www.iltfoundation.org.nz

Supporting our COMMUNITY

From education, health and welfare to recreation and the arts, the \$8.3 million in funding we returned to the community during the past financial year positively impacted on a diverse array of organisations.

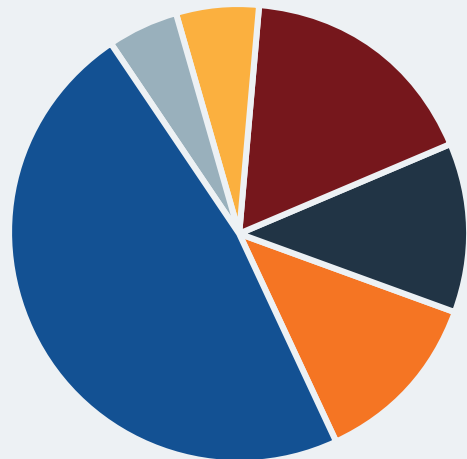
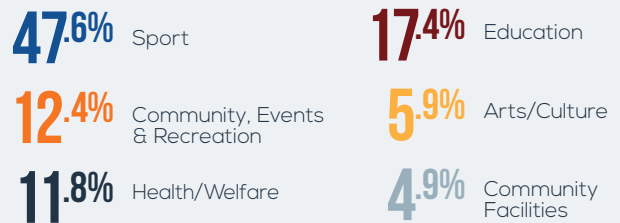
Comprising \$3.247 million from the ILT and \$5.070 million from the ILT Foundation, our grants undeniably made a tangible difference in every sector of our society.

Like you, we're proud to call Invercargill home and are genuinely invested in the future of this city – our enduring quest to initiate and fund valuable projects is testament to that.

But let's face it – giving the money away is the relatively easy part. Making it work in a beneficial way takes a united approach and the efforts of many.

Ultimately, the greatest gauge as to the true value of our funding is evidenced by what the money visibly achieves. Here's a snapshot of your Trust at work.

ILT and ILT Foundation Grants by Category 2017/2018



Relay for Life

From gumboot throwing to grown men racing scooters around an obstacle course in the Newfield Tavern carpark, our staff took an energetic approach to fundraising for the 2018 Relay for Life.

As staff and patrons united to raise vital funds for the Cancer Society to assist Southland families, their efforts were rewarded with over \$11,000 donated, blitzing the initial goal of \$5000.

Organiser Allison Bishop was thrilled with the response to the cause.

"Everyone just embraced it and it grew from there. It went quite viral," she said. "Even though it was driven by our establishments, their patrons really got involved as well so it was great to see everyone working together to support the cause."

"Everyone is affected one way or another by cancer so it really resonated with people. From the board and executive management to staff across all levels of the Trust, everybody did something to help at some stage along the line."

"From the board and executive management to staff across all levels of the Trust, everybody did something to help at some stage along the line." Allison Bishop



The relay itself was a family affair, with staff and their children alike relishing the positive atmosphere and community vibe onsite. Trust mascot ILTon was a popular feature as he was carried eagerly around the course.

"It was a lot of fun and everyone is keen to do it again in the future."

Complementing the dedicated efforts of our staff in supporting such a worthy community event, the Trust contributed a \$6000 grant to assist with operating costs involved with the 2018 Relay for Life.

Splish splash

ICC Aquatic Services Manager Pete Thompson witnesses the flashes of envy first hand when he talks about Invercargill's school swimming programme in other regions.

"One of the things I speak very proudly of is the partnership between the ILT and the council to deliver a programme which I have no doubt has helped save lives," he said.

"We are often seen through green envious eyes around the country for what we are achieving here.

In the last financial year, the Trust granted \$158,723 (\$25,000 ILT and \$133,723 ILT Foundation) to the programme, providing swimming lessons to all primary school children in the ICC rates area – a staggering 39,915 lessons to be precise.

It's a long-standing collaboration – a \$1.5 million grant in 2004 contributed to the construction of a learner's pool at Splash Palace, followed by annual funding for the programme since its inception in 2006.

"This programme is a hugely important one for our community which benefits our kids in so many ways. Not only is it equipping them with the skills to swim, it's also developing their self-confidence and self-esteem. For some of these kids, it's the absolute highlight of their week."

It's easy to gauge the level of enthusiasm.

"We have signs up around the pool 'please walk' and 'don't run' but kids usually come steaming through with such excitement it's hard for them to contain themselves," Pete said.

"The ensuing madness when they hit the changing room and can smell the pool is loud and some people probably find it an assault on their senses, but it's fantastic to see their energy. It's a hugely enjoyable experience for the kids."

"One of the things I speak very proudly of is the partnership between the ILT and the council to deliver a programme which I have no doubt has helped save lives" Pete Thompson



Shakespeare in the Park



Photo courtesy of Phil McCarthy



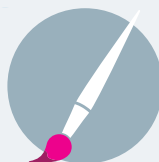
Culture

An extravaganza showcasing Maori and Pasifika, Polyfest attracts thousands of participants each year and was one of several cultural events which shared in \$91,992 of funding. Tu meke!



Community

Earning national accolades for its innovative model, Koha Kai featured among the numerous organisations to benefit from over \$602,000 invested into life-changing wellbeing initiatives for our community.



For Art's Sake

Now here's something to sing about! Over \$400,000 in funding was awarded to the arts sector, covering all genres from dance to literature and the theatrical magnificence that is Shakespeare in the Park.



Health

It's true what they say – the greatest wealth is health. That's why over \$378,000 of funding was injected into a vast range of health-related initiatives, helping everyone from precious newborns to our elderly residents.

ILT Scholarship helps launch radio

Jack Honeybone has always had the gift of the gab. Now he's making a career of it.

After graduating from the New Zealand Broadcasting School last year with top marks and a coveted award to his credit, the ILT Tertiary Scholarship recipient embarked on an internship at The Rock radio station.

Impressing with his energy and creative talents, he now produces Rock Nights and develops digital content for Rock Drive with Thane and Dunc – ranked the number one drive show in the country – along with weekend announcing duties.

"I love the intensity of working for a brand like The Rock. Radio really appeals to me because it's always evolving so there's no protocols as to what you have to be doing. It's never just black and white," Jack said.

"For me it's about being part of entertaining people and making them feel a bit better in some way, shape or form."

The bright lights and bustle of Auckland are a far cry from a caravan parked at ILT Kidzone where Jack first discovered his passion for radio as a teenager.

"I got pulled in to help at the festival and ended up announcing on Radio Kidzone for three years. That's where I first gave it a go and I guess caught the bug."

"Being accepted into the New Zealand Broadcasting School changed my life forever and the ILT Scholarship was really important in terms of having the confidence to do it. I wouldn't have been able to achieve what I have without the support I've had and I'm incredibly thankful for that."



From ILT Kidzone to the national airwaves... ILT Scholarship recipient Jack Honeybone is forging a career in radio.

Disc Golf on par

Golf has taken on a new dimension at Invercargill's picturesque Queen's Park.

Trust support was instrumental in the creation of an 18-hole disc golf course – one of the city's most popular new recreational activities.

Invercargill residents have taken to the sport with vigour, families of all ages getting out and enjoying the chance to take part in a free, fun and accessible activity which caters to a wide range of abilities.

Since officially opening in November 2017, it's already hosted New Zealand's most well-attended national competition.

The story behind the initiative is one of collaboration, with funding coming from the ILT, Community Trust of Southland and the Invercargill City Council-administered Active Communities fund.

What began with the dream of a small group of disc golf enthusiasts, blossomed with support from Sport Southland's Healthy Families Invercargill team, along with the Invercargill City Council's Youth Council and Parks Department.

Disc Golf South, a new entity created with help from Sport Southland, is now the sport's fastest growing club in New Zealand, with more than 50 members.

Inaugural president Martin Conway was also named BDO Administrator of the Year at this year's ILT Southland Sports Awards.

Sport Southland chief executive and Healthy Families Invercargill chairman Brendon McDermott said the Queens Park disc golf course initiative might never have happened without support from community funders like the ILT.

"We could see the potential for a lot of great benefits for the community - encouraging families to get out into nature together, a low or no cost physical activity option, something which suited all sorts of abilities - but with only a small group to drive this project it would have taken a long time to fundraise for," McDermott said.

"We always thought the disc golf course would be popular, but we underestimated just how successful it would be. It's fantastic that those stakeholders who have been involved are looking at other opportunities like this for our community."

The initiative was also a powerful example of stakeholders working together for the good of the community, McDermott said.

"The Queens Park disc golf course initiative might never have happened without support from community funders like the ILT." Brendon McDermott





to the FUTURE

- Planning and design work will continue on the new inner-city hotel with current timelines tracking well towards our aim of opening in October 2021.
- A record level of redevelopment work has been planned for the coming year as we maintain our strategy of reinvesting in our businesses with the goal of helping maintain profitability in future years.
- Due to the significant redevelopment work scheduled, the Invercargill Licensing Trust's budgeted pre-tax surplus for the coming year is expected to be below this past year's result. Underlying profit is anticipated to be slightly ahead of that achieved in this past year.
- The ILT Foundation's net surplus, available for grant distribution, is budgeted to match previous year's result.
- The level of financial and other support provided by the ILT Group to the numerous community organisations we assist is projected to be at comparable levels to the past financial year.

The Invercargill Licensing Trust Board comprises:

Alan Dennis (President), Mike Mika (Deputy President), Paddy O'Brien, Sean Bellew, Suzanne Prentice and Angela Newell.

The Trustees of the ILT Foundation are:

Alan Dennis (President), Mike Mika (Deputy President), Paddy O'Brien, Sean Bellew, Suzanne Prentice, Angela Newell, Jason McKenzie and Chris Ward.

"The whole is greater than the sum of its parts" Aristotle

First coined by the philosopher Aristotle, this phrase aptly applies to our Trust. For us, it takes a team of 700 people to achieve success. Every member of our Board, management and staff play a vital role in our accomplishments and we wish to record our sincere thanks for the exceptional contribution they make to our organisation and the community we serve.



Alan Dennis



Mike Mika



Paddy O'Brien



Sean Bellew



Suzanne Prentice



Angela Newell



Jason McKenzie



Chris Ward

GRANTS TO THE COMMUNITY



2nd NZEF Club	1,000
A Capella Singers Inc	1,500
Admin Professionals Celebrations Committee	3,500
Alex Lithgow Statue Trust	1,000
Alzheimers Society Southland Inc	2,500
Amputee Society of Otago & Southland Inc	1,000
Appleby Cricket Club	3,500
Arahi Maori Women's Welfare League	2,000
Ascot Pool Club (Stray Cats)	500
Association of Blind Citizens of NZ - Southland Branch	500
Athletics Southland	5,500
Aurora College	1,000
Badminton Southland	20,000
Bellyfull Invercargill	3,000
Big Willy Bob	500
BWR Sports Club	1,200
Bowls Southland	17,000
Brigadiers Netball Club	1,000
C3 Church Invercargill	1,000
Calvary Hospital Southland Ltd	5,000
Cancer Society of NZ - Southland Division Inc	12,000
Careerfest Southland	8,000
Chamber Music NZ - Southland Branch	12,000
Chamber of Commerce Southland	8,109
Child Matters	3,000
City of Invercargill Rugby League Club	2,000
City of Invercargill Highland Pipe Band	20,000
Clifton Car & Bike Club	1,300
Community Care Trust	950
Cycling Southland	34,200
Dan Davin Literary Foundation	6,000
Dance Opportunities Inc	2,000
Diabetes Southland Inc	1,000
Disc Golf South Inc	3,000
Eastern Suburbs Dart Club	550
Eastern Suburbs Rebels Pool Team	4,200
Environment Southland	2,500
FibreOctave	750
Foveaux Harmony Chorus Inc	2,000
Foveaux Toastmasters Club	1,000
Georgetown Bowling Club	800
Glen 560 All Sports Club	2,000
Glen Country Music Club	3,000
Golf Southland Inc	11,570
Grey Power Southland	10,000
Hawaiian Delights Rugby Team	1,000
He Tauaa Rugby League Club	4,000
Hearing Association Southland Branch	8,000
Heritage South	2,000
Hockey Southland Inc	20,500
Hospice Southland Charitable Trust	42,462
ILT Mid Winter Swim	1,304
ILT Trade Scholarships	61,000
Inner Wheel of Invercargill North	2,000
Invercargill Bowling Club	700
Invercargill City Charitable Trust - 2018 Southland Buskers' Festival	11,000
Invercargill City Council - 2018 Schools Swimming Programme	25,000
Invercargill City Darts Association	500
Invercargill Contract Bridge Club	1,500
Invercargill Diamonds Leisure Marching Team	800
Invercargill Filipino Dance Group	1,000
Invercargill Garrison Band /Ascot Park Brass of Invercargill	2,000
Invercargill Hockey Association	8,000
Invercargill Metropolitan Junior Cricket	5,000
Invercargill Musical Theatre Inc	30,000

Invercargill Old Boys' Cricket Club	2,400
Invercargill Potters Inc	2,000
Invercargill Primary School Educational Initiatives Trust - enrich@ILT, Sing Out	132,800
Invercargill Repertory Society Inc	12,500
Invercargill Rugby Football Club	15,000
Invercargill Secondary Schools Network Trust	50,000
Invercargill Symphonia Inc	1,500
Invercargill Tap Dancing Association	6,000
Invercargill Truck Show & Parade	5,000
Invercargill Young Professionals Inc	683
Jaguar Drivers' Club Southland Inc	7,138
James Hargest College	5,000
Kiribati Waiponamu Inc	3,000
Koha Kai Charitable Trust	20,000
Lindisfarne Kindergarten	1,702
Marist Brothers Old Boys' Rugby Football Club	18,450
Marist Cricket Club	2,000
Meals on Wheels	2,000
Menz Shed Invercargill Inc	2,000
MPMW Poitukohu	2,000
Murihiku Maori & Pasifika Cultural Trust	19,811
Murihiku Swimming Club Inc	2,113
NABBA Southland	600
National Council of Women Inc	1,000
New River Primary School	2,500
Newfield Dart Club	1,000
Netball South Zone Inc	250,000
Ngati Kapo Aotearoa Inc	1,000
Northend Bowling Club	3,000
NZ Dairy Industry Awards Trust	10,000
NZ Foundation of the Blind	2,000
NZ Young Farmers	15,000
Old Boys' Association Football Club	10,290
Onslow Indoor Bowling Club	600
Order of St John - Invercargill Area	1,600
Outward Bound	15,000
Phoenix Synchro (Southland)	15,600
Piping & Dancing Association of NZ - Southland	5,000
Pirates Old Boys' Rugby Club	1,000
Pregnancy Help Inc	4,000
Presbyterian Support Services	25,000
Queens Park Golf Club Inc	4,200
Rape & Abuse Support Centre Southland Inc	10,000
Rockdale Park Kindergarten	3,000
Rotary Club of Invercargill East	600
Rotary Club of Invercargill North	3,500
Royal Guards Leisure Marching Team	1,200
Rugby Southland - 2017/18 & 2018/19 seasons (Double amount due to timing)	800,000
Scripture Union in NZ Inc	3,000
Senior Citizens Christmas Dinner	34,572
South Invercargill Urban Rejuvenation Charitable Trust - South Alive	2,500
South Centre Anglican Care Trust Southland	17,500
Southend Boxing & Fitness	23,200
Southern Film Makers Trust	1,458
Southern Institute of Technology	2,000
Southern Pro-Wrestling Club Inc	15,000
Southern Rural Fire District	3,500
Southern Storytellers	1,974
Southland A & P Association	1,000
Southland Art Foundation	1,635
Southland Art Society Inc	20,000
Southland Basketball Association	161,500
Southland Bird Club	1,800
Southland BMX Club	1,000
Southland Boxing Association Inc	4,000
Southland Boys' High School	3,000

Southland Christmas Parade Charitable Trust	1,500
Southland Competitions Society Inc	4,500
Southland Cricket Association	45,000
Southland Deer Farmers' Association	3,000
Southland Disability Enterprises Inc	15,191
Southland Foodbank Charitable Trust	8,695
Southland Football Inc	46,000
Southland Girls' High School	13,000
Southland Indoor Bowls Centre Inc	5,000
Southland Indoor Leisure Centre Charitable Trust - ILT Stadium Southland	150,000
Southland Kindergarten Association	3,000
Southland Literacy Association	16,000
Southland Mathematical Association Inc	1,000
Southland Mens' Netball Team	4,000
Southland Musicians Club	5,000
Southland Olympic Weightlifting Inc	3,000
Southland Otago Axemens Association	6,000
Southland Riding for the Disabled	1,000
Southland Secondary Schools Cultural Scholarship	4,500
Southland Secondary Schools Principals Association	15,000
Southland Secondary Schools Sport	13,000
Southland Society of Model Engineers Inc	3,000
Southland Softball Association	15,000
Southland Table Tennis Association Inc	3,000
Southland Teachers & Judges Association	500
Southland Tennis Association Inc	20,000
Southland Triathlon & Multisport Club	10,500
Southland Youth One Stop Shop Trust	10,000
Sport Southland	46,500
Squash City Invercargill Inc	7,000
Squash Southland	40,000
St Andrew's Indoor Bowling Club	500
St Mary's Netball Club	5,500
St Paul's Presbyterian Church	3,000
Stadium Southland Ltd	10,000
Stuffed Hawkes Golden Oldies	2,000
Surrey Park Early Learning Centre Inc	2,000
Swim Southland	19,000
Takitimu Home Anglican Care Trust	5,293
Te Rangi Bowling Club	600
Te Wharekura O Arowhenua	1,000
Tertiary Education Scholarships	358,000
Tigers Sports Club NZ	3,500
Tisbury Primary School	516
Touch Southland	10,000
Venture Southland	101,500
Venture Southland - Promotion Fund	12,709
Verdon College	1,000
Waikivi Bowling Club	5,600
Waikivi Rugby Club	5,000
Waverley Bowling Club	1,800
Waverley Scout Group	5,000
Wellsouth Primary Health Network	3,500
Youth Development Southland Regional Trust	3,370
Small Grants under \$500	16,236
Grants Refunded - not required	-98,408

total
\$3,247,423
Invercargill Licensing Trust

\$8.3 MILLION

returned to your community
Your City. Your Trust.

Alex Lithgow Statue Trust	7,000
All Saints Badminton Club	1,800
All Saints Church	6,000
Alzheimers Society Southland Inc	10,000
Aqua Health Inc	2,000
Ascot Community School - 2018 ICT Facilitator Professional Development & Teaching Programme & equipment purchase (on behalf of all Invercargill Primary Schools)	114,308
Ascot Park Racing Consortium Inc	12,000
Athletics Southland	4,000
Athletics Southland - 2 scholarships	1,400
Badminton Southland	75,000
Badminton Southland - 2 scholarships	2,000
Bainfield Organic Gardens Ltd	30,000
Barnardos NZ - Invercargill Branch	27,000
Blue Jay Marching Club	5,500
Blues Indoor Bowling Club	400
Bluff Oyster & Food Festival	5,000
Bluff Promotions	800
Bone Marrow Cancer Trust	25,000
Bowls Southland	45,000
Bowls Southland Umpires Association	200
Bush Haven Native Bird Rehabilitation Trust	1,000
C3 Church Invercargill	4,000
Calvary Hospital Southland Ltd	30,000
Cancer Society of NZ - Southland Division Inc	10,000
CanTeen Southland	6,000
CCS Disability Action Southland	12,000
Choirs Aotearoa New Zealand Trust	3,000
City of Invercargill Highland Pipe Band	45,000
Collegiate Hockey Club	3,000
Collegiate Rugby Football Club Inc	10,000
Community Colleges NZ Ltd - Invercargill	5,000
Conductive Education Southern Charitable Trust	12,000
CS Arts Charitable Trust	5,000
Cycling Southland	159,700
Cycling Southland - 2017 Tour of Southland	20,000
Cycling Southland - 2 scholarships	3,100
Dance Opportunities Inc	3,850
Dance Opportunities Inc - scholarship	1,500
Deaf Aotearoa NZ Inc - Southland Branch	2,000
Demons Softball Club	4,500
Diabetes Southland Inc	7,000
Disabilities Resource Centre Southland Charitable Trust	12,500
Disc Golf South Inc	4,086
Dodgers Softball Club - Invercargill	5,000
Donovan Primary School	2,500
EDUK8 Charitable Trust - The Right Track programme	30,000
English Language Partners NZ Trust - Southland	3,000
Foveaux Harmony Chorus Inc	2,000
Georgetown Bowling Club	2,567
Georgetown Indoor Bowls Club	500
Georgetown Scout Group	690
Gladstone Scout Group	4,600
Glengarry Community Action Group	600
Golf Southland Inc	25,000
Greenacres Country Club Inc	4,200
GymSports NZ - scholarship	1,200
Head Injury Society of Southland Inc	8,000
HETTANZ Southland	600
Hockey Southland Inc	75,000
Hospice Southland Charitable Trust	35,000
IHC New Zealand Inc	4,500
Institute of Registered Music Teachers NZ - Southland	500
Invercargill Army Cadet Unit	1,000
Invercargill Bowling Club	3,000
Invercargill Central Friendship Club	400
Invercargill Citizens Bowling Club	4,500
Invercargill City Charitable Trust - 2018 Southland Buskers' Festival	11,000
Invercargill City Council - 2018 Schools Swimming Programme	133,723
Invercargill Film Society	40,000
Invercargill Fire Brigade - scholarship	1,200
Invercargill Garrison Band /Ascot Park Brass of Invercargill	45,000
Invercargill Garrison Band /Ascot Park Brass of Invercargill - scholarship	1,200
Invercargill Golf Club Inc	2,700
Invercargill Gymnastic Club Inc	10,000
Invercargill Harness Racing Club Inc	10,000
Invercargill Indoor Bowls Sub Centre	1,250
Invercargill Musical Theatre Inc	30,000
Invercargill Netball Centre	50,000
Invercargill Potters Inc	5,000
Invercargill Primary School Educational Initiatives Trust - enrich@ILT	342,693
Invercargill Repertory Society Inc	10,000
Invercargill Rowing Club Inc	5,000
Invercargill Secondary Schools Network Trust	100,000

Invercargill Secondary Schools Network Trust - 2017 Tertiary scholarships	66,000
Invercargill Summer Festival Charitable Trust	10,000
Invercargill Toy & Puzzle Library	2,500
Jet Boating NZ Inc - Southland Branch	1,000
Jubilee Budget Advisory Service Ltd	15,000
Kew Bowling Club Inc	11,400
Koha Kai Charitable Trust	60,000
Kuki Airani Mapu	3,000
Loss and Grief Support Trust Southland	20,000
Love Local Charitable Trust	4,000
LUG South	1,930
Makarewa Bowling Club	400
Makarewa Netball Club	1,000
Makarewa School	2,000
Marching Southland Association Inc	4,500
Menz Shed Invercargill Inc	7,500
Murihiku Maori & Pasifika Cultural Trust - 2018 Polyfest	30,000
Murihiku Swimming Club Inc	1,000
Myross Bush Netball Club	892
National Heart Foundation of NZ - Southland Branch	5,500
Netball South Zone Inc	150,000
NZ Academy of Highland & National Dancing	1,660
NZ Council of Victim Support Groups Inc	2,500
NZ Family and Fostercare Federation Inc	5,000
Orca Swimming Club Inc	3,000
Order of St John - Invercargill Area	135,250
Oreti Surf Life Saving Club	6,275
Otago Southland Chinese Association - Invercargill Branch	200
Panthers Softball Club	5,750
Parent to Parent Southland	14,000
Phoenix Synchro (Southland)	30,000
Phoenix Synchro (Southland) - 4 scholarships	4,000
Piping & Dancing Association of NZ - Southland	5,750
Pirates Old Boys' Rugby Club	30,000
Port Softball	3,500
Presbyterian Support Services - Family Works; Children's Day; Foster Carers Family Retreat	119,500
Queens Park Association Football Club	5,000
Queens Park Golf Club Inc	10,000
Queens Park Ladies' Golf Club	700
Rape & Abuse Support Centre Southland Inc	15,000
Rata Netball Club	4,000
Road Safety Education Ltd	1,767
Road Safety Southland	5,000
Rockdale Park Kindergarten	3,000
Rockquest Charitable Trust	6,000
Ronald McDonald House	2,500
Rosedale Marching team	1,500
Royal NZ Foundation for the Blind	2,500
Royal NZ Plunket Society - Invercargill Branch Inc	12,400
Rugby Southland	340,000
Salford School	2,500
Shakespeare in the Park Charitable Trust	6,000
Shakespeare in the Park Charitable Trust - scholarship	1,500
South City Community Choir	1,000
South Invercargill Urban Rejuvenation Charitable Trust - South Alive	15,000
Southern Adult Literacy Inc	3,000
Southern Dragways	2,000
Southern Institute of Technology - 2017 Trade scholarships	10,000
Southern Miniature Horse Club 1994 Inc	500
Southern National Miniature Horse Club	500
Southern Snooker & Billiards Association	3,250
Southern Sou'NZ Inc	1,500
Southland A & P Association	4,000
Southland ACC Advocacy Trust	5,000
Southland Art Society Inc	22,500
Southland Asthma Society	12,000
Southland Basketball Association	92,000
Southland Basketball Association - 2 scholarships	1,700
Southland Bee Society	500
Southland Beneficiaries and Community Rights	25,000
Southland Boxing Association Inc	3,000
Southland Canoe Club	3,840
Southland Canoe Club - scholarship	500
Southland Christmas Parade Charitable Trust	11,000
Southland Clay Target Club	10,000
Southland Clay Target Club - 2 scholarships	1,400
Southland Community Nursery Conservation Trust	5,000
Southland Competitions Society Inc	3,500
Southland Cricket Association	125,000
Southland Darts Association	1,600
Southland Disability Enterprises Inc	40,000
Southland District Rugby Football League Inc	40,000
Southland Education	15,000
Southland Equestrian Centre	1,500
Southland Filipino Society	1,000
Southland Fire Service Museum Society	5,000
Southland Foodbank Charitable Trust	20,000
Southland Football Inc	95,000

Southland Girls' High School	3,520
Southland Indoor Bowls Centre Inc	22,000
Southland Indoor Bowls' Centre Inc - 2 scholarships	1,200
Southland Indoor Bowls Umpires' Association	500
Southland Indoor Leisure Centre Charitable Trust - ILT Stadium Southland	250,000
Southland Junior Dart League	500
Southland Kennel Association	2,000
Southland Kindergarten Association	7,600
Southland Life Education Community Trust	5,000
Southland Literacy Association	7,906
Southland Mangaia Club Inc	6,000
Southland Mature Employment Services	5,000
Southland Motorcycle Club Inc - Burt Munro Challenge	43,400
Southland Multicultural Council Inc	12,000
Southland Multiple Sclerosis Society Inc	17,500
Southland Olympic Weightlifting Inc - scholarship	1,200
Southland Piping & Drumming Development Trust	35,000
Southland Pony Club Inc	1,380
Southland Racing Club	10,000
Southland Riding for the Disabled	12,000
Southland Rodeo Association Inc	5,500
Southland Science & Technology Fair	1,500
Southland Secondary Schools Sport	12,000
Southland Social Sciences Fair	1,500
Southland Society of Model Engineers Inc	2,000
Southland Softball Association - redevelopment of softball clubrooms and playing facilities	200,000
Southland Softball Association	40,000
Southland Softball Association - scholarship	700
Southland Sports Car Club	20,000
Southland Stock Car Drivers' Association	5,500
Southland Table Tennis Association Inc	23,137
Southland Tennis Association Inc	55,000
Southland Triathlon & Multisport Club	11,000
Southland Triathlon & Multisport Club - 2 scholarships	2,400
Southland Water Polo	699
Southland Women's Club Inc	5,416
Southland Woodworkers Guild	3,563
Southland Youth One Stop Shop Trust	25,000
Spirit of Southland Inc	6,000
Sport Southland	171,000
Squash Southland	90,000
Squash Southland - scholarship	700
St Patrick's Parish	543
St Theresa's School	2,500
Star Rugby Football Club	15,000
Strings of Southland Charitable Trust	2,200
Swim Southland	70,000
Takitimu Home Anglican Care Trust	22,245
Talent Development Southland Charitable Trust	56,000
Target Shooting Invercargill Inc	9,665
Tay Music Trust - scholarship	500
The Parenting Place	2,500
Thistle AFC Inc	9,607
Tisbury Primary School	2,500
TOA Fighting Systems Southland Inc - 3 scholarships	3,600
Touch Southland	40,000
Venture Southland - Invercargill Spring Festival; 2018 Kidzone Festival; Southland Festival of the Arts 2018	59,325
Verdon College	15,000
Vintage Car Club of NZ - Southland Branch Inc	6,750
Voice for Life	1,000
Volleyball Southland Inc	32,000
Waihopai Association Football Club	5,000
Waihopai Bowling Club Inc	3,000
Waihopai School	2,256
Waikiki Piping and Dancing Society	1,000
Waikiki Rugby Club	15,000
Waverley Bowling Club	75,000
Waverley Scout Group	5,000
Wellsouth Primary Health Network	2,836
Western FC	1,500
Windsor North School	2,226
YMCA Charitable Trust Southland	32,500
Young Spirit Indoor Bowls Club	200
Youth Development Southland Regional Trust - 2018 Kiwi Can & 'Career Navigator' programmes	25,000
Youthline Southland Inc	5,000
Grants Refunded not required	-99,078

total
\$5,070,627
ILT Foundation



P 03 211 3640 **F** 03 214 4418

E ilt@ilt.co.nz

PO Box 208, Invercargill 9840, New Zealand

www.ilt.co.nz



P 03 211 3640 **F** 03 214 4418

E info@iltfoundation.org.nz

PO Box 1771, Invercargill 9840, New Zealand

www.iltfoundation.org.nz