



ILT & ILT FOUNDATION

2021

year in review



FROM THE BOARD CHAIR & CHIEF EXECUTIVE

It is our pleasure to present the ILT (Group) 2021 year in review.



Alan Dennis
President

Chris Ramsay
CEO

Following a particularly disruptive year, there is a growing appreciation for social enterprise business concepts that value community needs ahead of individual gain. Our community ownership model allows us to do just that. We are committed to reinvesting in Invercargill, and our community remains at the heart of all our initiatives.

This review highlights some of the amazing community projects that we've been able to support. It also celebrates several developments happening in our wonderful city that we can all be proud of.

The past year has taught us a valuable lesson that nothing is insurmountable if we pull together. That's precisely what our ILT family has done. At every level of the organisation, we epitomise our values of Family, Manaakitanga, Trust, Excellence and Dynamism. It is the very essence of our team and the work we do in helping to generate the returns that we make to our shareholders – for our community.

NOTE FROM THE CHAIR

They say adversity does not build character, it reveals it. This is true for our ILT family. During the past year, every member of our board, management and staff have demonstrated an ongoing commitment to our community.

As an organisation we truly value and respect their collective passion and drive. We are blessed to have an incredibly talented team of 650+ people and we wish to thank each and every one of you.



Alan Dennis



Angela Newell



Paddy O'Brien



Sean Bellew

The ILT Board comprises:

Alan Dennis (President), Angela Newell (Deputy President), Paddy O'Brien, Sean Bellew, Suzanne Prentice and Louise Evans.

The Trustees of the ILT Foundation are:

Alan Dennis (Chair), Angela Newell, Paddy O'Brien, Sean Bellew, Suzanne Prentice, Louise Evans, Jason McKenzie and Chris Ward.



Suzanne Prentice



Louise Evans



Jason McKenzie



Chris Ward



Photo: The Langlands Hotel



300+
organisations
funded



240
scholarships
in Education,
Sports and
Arts



4500
lettuces
grown in our
nursery



764
QR codes
displayed in our
businesses



1710
bowlers
supported



9572
Delivered meals



470
years' worth
of staff long service
celebrations

ILT EXECUTIVE MANAGEMENT TEAM

Terry Laidlaw – Operations Executive
Janet Ellis – People & Capability Executive
Chris Ramsay – Chief Executive
Neil Affleck – Chief Financial Officer
Nikki Buckley – Corporate Sales Executive
Angee Shand – Marketing & Innovation Executive

OVER \$6 MILLION GIVEN BACK TO THE COMMUNITY

A FOND FAREWELL TO OUR DEPUTY CHAIR

After 10 years of dedicated service, Mike Mika has stepped down from his role as our Deputy Chair. Mike has a proud resume of national and international sporting achievements that held him in good stead for life both on and off the field. Post rugby he dedicated much of his time to community advocacy, supporting many not for profit organisations, whilst balancing this with work in the legal profession as a lawyer and director of Preston Russell Law (now PRLaw). He'll now add a new honour to his list as he moves to Wellington to take up his appointment as a District Court Judge in Lower Hutt.



We thank him for his unwavering commitment and passion for the community and wish him all the best for the future.

Angela Newell was voted into the Deputy Chair seat and a by-election for the vacant seat was held in May 2021 with Louise Evans being the successful candidate.



LOUISE EVANS JOINS OUR ILT FAMILY

We are pleased to welcome Louise Evans to the ILT board. Louise has a passion for innovation, working in the start-up sector accelerating growth in emerging business. She is keen to apply these skills to her governance role on the board and help enhance the lives of our community, particularly those in the next generation.

OUR PEOPLE AND CAPABILITY EXECUTIVE – JANET ELLIS



We are thrilled to introduce our new People and Capability Executive, Janet Ellis. Janet joined the team in August this year, coming from Southland District Council, where she has held the role of People and Capability Manager for over 8 years. Janet has a significant amount of experience in strategic planning and implementation of best practice HR initiatives. She has a passion for people with a particular focus on health, safety and wellbeing.

We look forward to her contribution in ensuring our organisation and its people have the capability to continue its journey to benefit the community.

FINANCIAL PERFORMANCE IN BRIEF

The financial year started with almost all our businesses closed, except for our retail bottle stores, and sales for the first three months to 30 June 2020 were consequently down by \$7.2 million. That we managed to end the financial year in March 2021 with a reasonable after tax profit of \$6.2 million, which is \$500,000 lower than the \$6.7 million profit achieved in 2020, is testament to the skill and expertise of our Executive and Management teams.

This result was significantly impacted by Covid-19. The considerable drop in sales and profit was offset by the positive effect of the wage subsidy, along with other Covid-19 mitigation measures such as a business wide restructure and immediate reduction in our maintenance and asset replacement expenditure.

During the midst of the lockdown period, our trustees made the brave call to continue with The Langlands Hotel construction. The early procurement process that they then approved has saved our Trust from the significant cost escalation that the construction industry is now experiencing.

The effects of Covid-19 and the necessary financial measures we took during this time will impact our financial performance over the coming years, as we look to undertake the deferred maintenance schedule and recommence planned capital expenditure.

While we acknowledge there is still significant uncertainty around Covid-19 and the impact on trading due to possible further restrictions, we maintain a sound financial position. Our stated aim of ensuring we build The Langlands Hotel whilst continuing to make donations to the community continues to be achieved.

In summary, our financial performance was better than expected as a result of the prudent financial measures that we engaged coupled with positive Government support. More crucially, though, it was due to the wonderful support our organisation and establishments received from the community following the lockdown period – and for this we thank you.

**Please note once the audit process is completed our group financial performance for the year ended 31 March 2021 will be available.*



ILT Foundation's key purpose is to distribute grants generated through the gaming machines, located within ILT venues, to benefit the city of Invercargill and its residents.

The ILT Foundation has returned over \$82 million in grants allocated since the commencement in 2006.

Covid-19 impacted on the operation, with machines unable to operate at Covid Levels 3 and 4 and only every 2nd machine operational at Level 2. During this time our focus was on careful management of costs and reducing cost where possible.

For the year ended 31 March 2021 a total of \$4.030 million was returned in grant funding to community organisations and charitable trusts across health, welfare, education, arts and amateur sports sectors.

ILT Foundation's successful scholarship partnership programme(s) include tertiary, trade-based, arts/cultural and New Zealand representative funding support.

ILT FOUNDATION

A prudent organisational structure has provided the platform to minimise operational costs to maximise returns to the community.

ILT Foundation recognises gaming is a sensitive product, is very aware of our social responsibilities and we remain committed to providing safe and enjoyable gaming venues.

Gambling harm awareness and harm minimisation remains a priority focus for the ILT Foundation in our venues.

ILT Foundation continues to be one of the leading gaming trusts in New Zealand given the substantial level of grants returned to the community, along with its proactive approach to gambling host responsibility.

**For more information
on the ILT Foundation visit
www.iltfoundation.org.nz**

Lisa-Maree Fleck
Manager ILT Foundation



THE LANGLANDS UPDATE

Construction is moving full steam ahead and opening remains on track for early 2022. As the build moves into the 'close in' phase the visible activity will become less obvious from the outside. Activity onsite will, however, begin to really intensify as the various sub-trades start to mobilise.



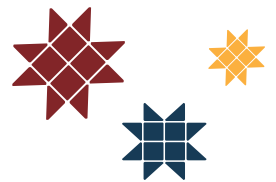
Behind the panels, the ground floor is taking shape it will include floor to ceiling windows that maximise the sunshine and will be a space for locals and visitors alike.

5 new dining and entertainment options...

- *The laneway bar is a Melbourne inspired design with an intimate atmosphere.*
- *The top level bar will offer panoramic views of the city with a sophisticated ambience.*
- *The lobby bar will give yet another choice to guests of the hotel and residents of the city.*
- *Our day-trader café will be a bright and fresh spot to grab your morning coffee, smoothie or fresh juice.*
- *Inspired by fusion cuisine the signature restaurant will bring new flavours to the city; think sharing platters and fresh tastes!*

TIRAMARAMA HAKARI NUI

means to shine, to shimmer and to light which is exactly what the 2020 Murihiku Matariki Festival did.



After a particularly disruptive year with changing COVID alert levels, the Tuurama Trust forged ahead with plans to bring the 2020 Matariki celebrations to life. There was never a doubt in festival organiser Sharne Parkinson's mind that the event wouldn't go ahead.

"We wanted to give the community some light in their winter season, especially after lockdown and COVID 19," Sharne said.

"We were blown away by the public response to Tiramarama Hakari Nui Murihiku Matariki Festival 2020. It was a massive push to get it together but we were all in awe watching the public roll through those gates – 24,000 people later!"

The inaugural festival in 2019 saw around 6,000 people join the celebrations, they were treated to a brightly lit Coronation Avenue leading up to a Matariki light show at the Band Rotunda.

The 2020 event was a step up from this and expanded to other areas of the park where people could see art installations, enjoy live performances and explore the park in a completely different light.

The festival is about remembering loved ones who have passed and brings whānau and the community together to learn more about cultural toanga, like puoro (instruments) and toi (art).



Photo: D. Wheeler, ruggedsouthphotography and Sharne Parkinson

"It's really important to our Murihiku Matariki Whānau that the community of Southland really understands the essence of what Matariki represents to us through our festival," Sharne said.

"We want whānau to learn through arts that they create for the festival. Everything toi māori has underlying links to environment,

people, Atua (gods) animals and then it all links to the Matariki story which will play again at each festival."

Community art workshops were held throughout the Matariki period with the artwork forming the centrepieces for the festival.

"We provide the workshop organisers with a brief and all the materials, then they go from there. It's great that more and more people are wanting to be involved but it does mean an increased need for materials, which we couldn't do without the support of our funders," Sharne said.

"ILT has been funding the festival since its inception and have been instrumental in helping us bring the festival to Invercargill. We are very grateful for their continued support."

Education and inclusiveness are strong motivators for the Trust, and it is particularly pleasing to see these elements coming through at the festival.

"My favourite moment from the festival was walking behind a whānau and the pre-schooler, who had made whetu (stars) for the festival, was explaining to the rest of the whānau what Matariki was. That the 9 stars are the beginning of Māori New Year. That was special," said Sharne.

The organising committee is a small group with a big job that is made easier with the help of volunteers. An SOS call for help was sent out in the lead up to last year's event and 26 students from SIT's Event Management programme volunteered their services.

Next year's theme is a nod to the many volunteers, whānau and community who help make the Murihiku Matariki festival a success, and it's aptly named 'Te Waka Kohikohi – The Gathering Fleet'.

OUT OF THE GATE |

Elizabeth Park is home to Southland's only BMX club whose popularity has grown so much that their membership numbers have doubled over the last few seasons.

To cope with the growing interest and to cater for the current track's rider capacity membership is capped at around 100 people. And there's still another 30-40 people on the waiting list, but that's all about to change with the addition of a new track at Elizabeth Park.

The story behind the track redevelopment is one of collaboration. With the total project cost expected to be \$385,500, the club has worked tirelessly to raise an impressive \$95,500 themselves. The remaining funding will come from ILT Foundation, Southern Trust, Community Trust South, Lotteries and various Invercargill City Council funds.

Work has commenced on site with the next major steps planned for spring 2021 and completion in time for the start of the 2022 season.

It has been a long journey for Southland BMX Club committee member Ngarita Te Patu who has been working on this project for a 'solid four years' but she feels like they are making real progress now.

"We've had some really amazing funders jump on board, like ILT and with their help we've been able to start work on our new track," Ngarita said.

"Other clubs have had to work with their old foundations and expand on what they have, but we're very fortunate that our location means that we are able to start from scratch and get it right from the start."

The new purpose built track will allow the club to grow and cater for more members. It also provides the chance to host national competitions and help to put Invercargill on the map for BMX enthusiasts nationwide.

Riders will continue to use the old track while the new one is



developed. Once completed the club will maintain the two tracks, to give more time to their younger members and to help alleviate some pressure on officials to run multiple training nights as they can cater for larger numbers.

The club's philosophy is wider than the sport itself and encourages open communication, friendliness and aims to develop leadership skills in older riders around areas of coaching and mentoring.

"For the younger riders it's not just about the bike skills, they learn independence skills, safety and respect for other riders and officials. It's a great family sport where everyone is encouraged to be involved, not sit on the side-line, that's why I love it," said Ngarita.

For ILT, this growing sport is all about wellbeing and the inclusiveness the Southland BMX Club aims to achieve aligns well with ILT values. The new track will be an asset not only for the club but also for the continued growth of the sport here in Southland/Murihiku.

MURIHIKU MARAE REDEVELOPMENT

The Waihōpai Rūnaka is planning for the future with a multi-million dollar upgrade to Murihiku Marae.

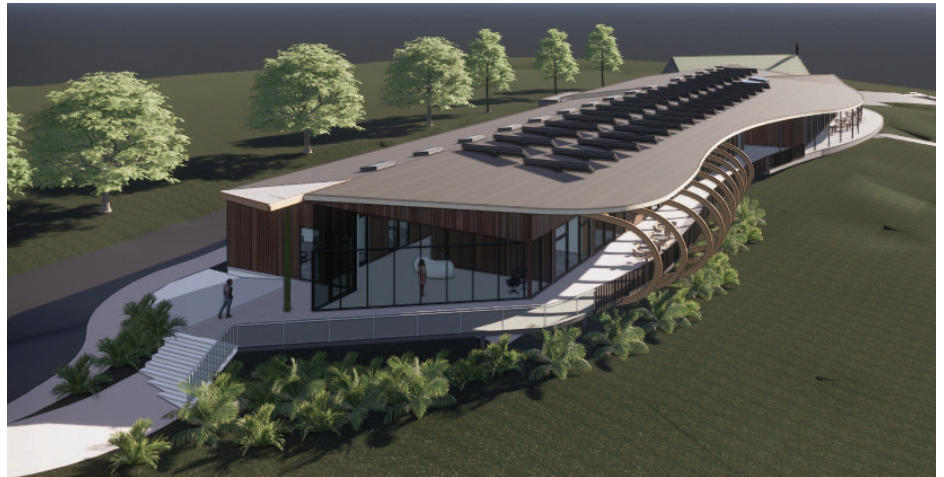
The building design takes inspiration from a tohorā (whale) and aims to align with a triple net -zero (water, energy, carbon) approach. The Wharenuī Te Raitauneke (Marae meeting house) would remain but nearly all other buildings will be replaced by purpose-built, environmentally sustainable structures that incorporate solar panels, rainwater harvest, stormwater treatment via wetlands, no gas used in cooking or heating, and enhanced natural light and ventilation.

This project is a major undertaking for Waihōpai Rūnaka and has been years in the planning. We're immensely proud to contribute \$300,000 of funding support towards this integrated development that will help ensure this culturally significant place is future proofed for generations to come.

'Titiro whakamuri, kia aka whakamua',
To face the future, look to the past.

"Murihiku Marae is a place for Kāi Tahu whānau to gather, a place for them to stand - Tūrakawaewae, a place to call home, but it is more than that.

It is a place for all peoples in Waihōpai Invercargill to come to learn about this rohe (area), to learn from the descendants of the people that assisted the European whalers and sealers to settle



on this whenua, it is a place to come to continue to build and strengthen our partnership, to understand that we hold the Mana Whenua but are willing to share our knowledge.

The redevelopment of the Wharekai and Rūnaka programme and administration spaces at the Marae will enable Rūnaka and community support services to continue and expand, to be a Civil Defence Emergency Centre, to be the place of learning, to be a community hub for all of Murihiku Southland. To be the pā of old, but in a modern and more fluid form.

We acknowledge the very generous support by both ILT and ILT Foundation in assisting us to undertake this project, and look forward to welcoming you all onto the redeveloped site in 2023".

Cyril Gilroy, Waihōpai Rūnaka Chairman



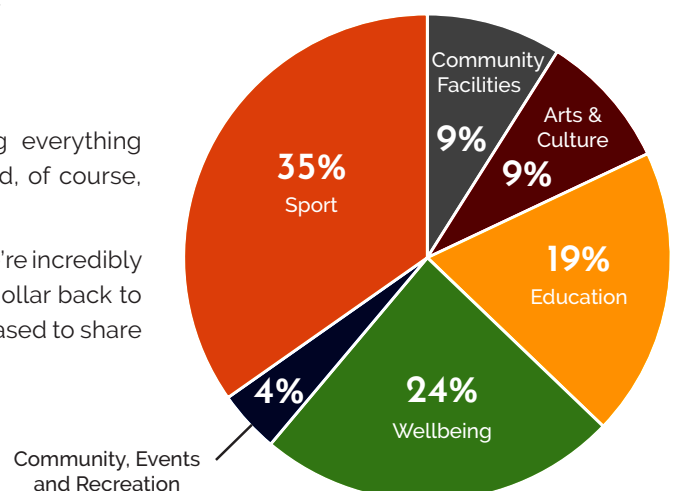
Images: Boon Architects for Waihōpai Rūnaka Inc

SUPPORTING OUR COMMUNITY

This year we've supported hundreds of organisations covering everything from health and wellbeing, recreation and facilities to culture and, of course, education.

Calculating the numbers certainly adds up, and one number that we're incredibly proud of is that we are heading towards giving our 200 Millionth dollar back to the community. It's a remarkable milestone and one that we're pleased to share with you.

ILT and ILT Foundation
Grants by Category 2020/2021



LOCAL FLAVOURS



Southland is blessed with fertile lands and a climate that yields some of the country's best produce. Our restaurants take pride in incorporating local flavours into their menu and creating their own take on traditional Southland fare.

Matt Cavanagh, Head Chef at The Saucy Chef wants people to try something a little different; his menu has a wide range of farm gate favourites including duck, lamb and beef cheeks. For those who enjoy the wild side, Matt has introduced more game dishes, so you can sample hare, red deer and even goat.

"We wanted to include dishes that you don't always see on menus down here in the south, introduce new meats to our diner's taste buds," Matt said.

As well as all the usual favourites including Stewart Island salmon and Southern Blue Cod, The Foundry's Head Chef Colin Micklewright is working with provincial farmers to supply lamb directly from the farm to the table. Watch this space as he looks to take it a step further and have two farmers battle it out for lamb supremacy in the restaurant.

Emberz Restaurant at the Ascot Park Hotel has a 'Farm to Fork' philosophy that includes loads of distinctive Southland flavours.

It doesn't come any fresher or more local as the vast majority of the menu's vegetables come from the Ascot's onsite nursery.

The nursery has been so successful over the last year that an additional tunnel house was added to cater for when The Langlands opens in 2022. Utilising double wrapping, LEDs and heating, the nursery can grow a range of brassicas, peppers, herbs, garnishes and other unseasonal vegetables throughout the winter months.

The nursery team have their own soil mixture and organic compost that helps add to the home grown taste, and the onsite beehives from Munro Honey Co., make a welcome addition to the breakfast and dessert menu.

For Ascot Park Hotel's Executive Chef Simon Henry, it's all about relationships and finding local suppliers who share similar ethics on farming and sustainability. You'll see long standing regional suppliers like Highfield Farm, Hereford Prime Beef and South Fish on the menu.

This philosophy extends outside of the kitchen with Simon and his team taking time to visit their suppliers' farms.



Learning about the whole journey to have a better understanding of what we eat and where it comes from.

"For us, it's about telling the stories of our Southern region, the changing seasons, the people who work the land, the sea and the bounty it provides," Simon said.

Photos: Neat Places

Our Vision: A vibrant Invercargill

Our Purpose: For our community – Mō tō tātou hapori

Our core values reflect the essence of our organisation and form the yardstick we hold ourselves accountable to.



FAMILY

A belief that honesty is always the best policy. Being trustworthy and patient and taking personal responsibility. Caring for one another.



MANAAKITANGA

It is the epitome of hospitality and welcoming guests as family. It is about integrity, trust, sincerity and equity.



TRUST

It's honesty, integrity, doing what you say you will do and others knowing they can rely on you to do it.



EXCELLENCE

Strive to excel in every aspect of our business and approach every challenge with a determination to succeed.



DYNAMISM

Approaching every undertaking with enthusiasm, energy and drive.

OVER \$6 MILLION TO THE COMMUNITY

Alzheimers Society Southland Inc	\$1,250	Presbyterian Support Southland	\$15,839
Amputee Society of Otago & Southland Inc	\$500	Queens Park Golf Club Inc	\$2,500
Arts Murihiku Charitable Trust	\$5,000	Rape and Abuse Support Centre Southland Inc	\$2,674
Athletics Southland Inc	\$9,500	Road Safety Education Ltd	\$1,000
Aurora College	\$500	Royal NZ Foundation of the Blind	\$500
Blue Light Invercargill Branch Inc	\$6,278	Royal NZ Plunket Trust (Invercargill branch)	\$2,500
Bowls Southland Inc	\$8,500	Rugby Southland	\$200,000
Chamber Music NZ Trust	\$6,000	Sharks Basketball Ltd	\$20,000
City of Invercargill Highland Pipe Band Inc	\$10,278	South Centre Anglican Care Trust Southland	\$8,750
Cowboys Rugby League Club	\$1,400	Southern Institute of Technology	\$1,000
Cycling Southland Inc	\$15,000	Southland Amateur Rowing Association Inc	\$1,755
Diabetes New Zealand (Southland)	\$500	Southland Art Society Inc	\$10,000
Disc Golf South Inc	\$1,250	Southland Badminton Association	\$10,000
Eastern Suburbs Rebels Pool Team	\$500	Southland Basketball Association Inc	\$80,000
Glen 560 All Sports Club	\$500	Southland Bird Club	\$1,000
Golf Southland Inc	\$7,023	Southland Boys' High School	\$500
Graeme Dingle Foundation Southland	\$1,500	Southland Charitable Hospital Trust	\$430,000
Great South Promotion Fund	\$2,609	Southland Chevrolet Club Inc	\$1,000
Grey Power Southland	\$5,000	Southland Christmas Parade Charitable Trust	\$750
Hearing Association Southland Branch	\$4,000	Southland Cricket Association Inc	\$15,367
Heritage South Trust	\$500	Southland Disability Enterprises Ltd	\$5,191
Hockey Southland Inc	\$10,250	Southland Football Inc	\$23,000
ILT Dart League	\$696	Southland Girls' High School	\$500
ILT Trade Scholarships	\$3,712	Southland Indoor Bowls Centre Inc	\$2,630
Invercargill City Charitable Trust Board	\$5,074	Southland Indoor Leisure Centre Charitable Trust	\$227,250
Invercargill City Council	\$12,500	Southland Justices of the Peace	\$850
Invercargill Dodgers Softball Club Inc	\$500	Southland Secondary Schools' Cultural Scholarship	\$2,250
Invercargill Garrison Band Inc	\$10,000	Southland Secondary Schools Principals' Association	\$7,000
Invercargill Hockey Association	\$4,000	Southland Secondary Schools Sport	\$9,000
Invercargill Filipino Dance Group	\$500	Southland Softball Association Inc	\$7,500
Invercargill Kiribati Community & Youth Group	\$500	Southland Tennis Association Inc	\$10,000
Invercargill Old Boys' Cricket Club	\$1,250	Southland Triathlon and Multisport Club Inc	\$4,750
Invercargill Primary School Educational Initiatives Trust	\$131,873	Southland Youth One Stop Shop Trust	\$5,000
Invercargill Repertory Society Inc	\$6,250	Special Olympics Southland	\$1,547
Invercargill Rock 'n' Roll Club Inc	\$700	Sport Southland	\$17,500
Invercargill Rugby Football Club	\$10,740	Squash Southland Inc	\$10,000
Invercargill Secondary Schools' Network Trust	\$25,000	Stadium Southland Ltd	\$15,000
Invercargill Symphonia Inc	\$2,500	Swimming Southland Inc	\$9,500
Invercargill Truck Show & Parade	\$2,500	Te Rangi Bowling Club	\$870
James Hargest College	\$1,500	Te Wharekura O Arowhenua	\$500
Jubilee Budget Advisory Service Ltd	\$2,500	Tertiary Education Scholarships	\$241,314
Learning Differences Aotearoa Trust	\$2,000	Touch Southland Inc	\$5,000
Lighthouse Southland Inc	\$2,500	Tuurama Trust	\$5,000
LUG South	\$1,920	Verdon College	\$500
Marist Brothers Old Boys' Rugby Football Club	\$8,500	Volleyball Southland Inc	\$34,022
Menz Shed Invercargill Inc	\$2,000	Waihopai Runaka Inc	\$100,000
Miharo Murihiku Trust	\$7,500	Waikiwi Rugby Football Club Inc	\$1,870
Newfield Bluez Dart Team	\$700	Waverley Bowling Club	\$609
Newfield Park School	\$2,140	Small Grants under \$500	\$9,245
Newfield Dart Club	\$500	Grants returned	(\$52,500)
Netball South Zone Inc	\$125,000		
Old Boys' Association Football Club	\$3,500		
Order of St John	\$1,500		
Senior Citizens Dinner	\$23,871		
Phoenix Synchro Southland Inc	\$7,500		
Pirates Old Boys' Rugby Club (Invercargill) Inc	\$1,000		
		TOTAL	
		\$2,020,296	

Alzheimers Society Southland Inc	5,000
Aqua Health Inc	1,050
Arts Murihiku Charitable Trust	10,000
Ascot Community School - ICT Facilitator (IPPA)/chrome books	50,710
Athletics Southland Inc	2,000
Autism New Zealand Inc	2,500
Awarua Whanau Services	10,000
Barnardos New Zealand Inc (Invercargill branch)	14,500
Blue Light Ventures Inc	955
Bowls Southland Inc	22,500
Bush Haven Native Bird Rehabilitation Trust	500
Cancer Society of NZ - Otago & Southland Division Inc	10,000
CCS Disability Action Southland Inc	6,000
Chamber of Commerce Southland Inc	750
City of Invercargill Highland Pipe Band Inc	22,500
Collegiate Rugby Football Club Inc	5,000
Conductive Education Southern Charitable Trust	7,500
CS Art Charitable Trust	2,500
Cycling Southland Inc	111,250
Demons Softball Club	2,250
Diabetes New Zealand (Southland)	4,000
Disabilities Resource Centre Southland Charitable Trust	6,250
Disc Golf South Inc	1,330
Eduk8 Southland Charitable Trust	7,500
Epilepsy Association of NZ - Southland Branch	3,750
Golf Southland Inc	12,500
Graeme Dingle Foundation Southland	12,500
Great South (Southland Regional Development Agency Ltd)	17,750
Greenacres Country Club Inc	2,100
Greenlight Innovations Ltd	250
Head Injury Society of Southland Inc	5,100
Heritage South Trust	1,100
Hockey Southland Inc	37,500
Invercargill City Charitable Trust Board - 2020 Christmas in the Park	5,000
Invercargill City Council - 2021 Schools Swimming Programme	148,811
Invercargill Dodgers Softball Club Inc	2,500
Invercargill Garrison Band Inc	20,000
Invercargill Golf Club Inc	1,000
Invercargill Harness Racing Club Inc	5,000
Invercargill Indoor Bowls Sub Centre	625
Invercargill Netball Centre Inc	25,000
Invercargill Primary School Educational Initiatives Trust - enrich@ILT	378,000
Invercargill Repertory Society Inc	5,000
Invercargill Secondary Schools Network Trust - Tertiary scholarships	70,300
Invercargill Secondary Schools Network Trust	100,000
Invercargill Toy and Puzzle Library Inc	1,250
James Hargest College - scholarship	500
Jubilee Budget Advisory Service Ltd	21,940
Jubilee SuperGrans Ltd	6,000
Kew Bowling Club Inc	700
Kiwi Family Trust	650
Learning Differences Aotearoa Trust	3,500
Lighthouse Southland Inc	6,250
Loss and Grief Support Trust Southland	20,000
Love Local Charitable Trust	2,000
LUG South	1,350
Marklin Club Southland	1,000
Menz Shed Invercargill Inc	5,000
Motorcycling New Zealand - scholarship	3,000
Murihiku Maori and Pasifika Cultural Trust	60,000
Netball South Zone Inc	112,500
NZ Council of Victim Support Groups Inc	2,000
NZ Family and Fostercare Federation Inc	2,500
Omaui Landcare Charitable Trust	15,000
Order of St John - Invercargill Area	17,539
Otatara Bowling Club	5,000
Pacific Island Advisory Charitable Trust	6,922
Panthers Softball Club Inc	3,000
Paralympics New Zealand Inc	600
Parent to Parent Southland	3,500
Phoenix Synchro Southland Inc	15,000
Piping and Dancing Association NZ Inc	650
Pirates Old Boys Rugby Club (Invercargill) Inc	7,500
Presbyterian Support Southland - Family Works; Children's Day	116,000
Queens Park Association Football Club	2,500
Queens Park Golf Club Inc	350
Rape and Abuse Support Centre Southland Inc	7,500
RMH South Island Trust	2,500
Road Safety Southland	2,500
Royal NZ Foundation of the Blind	2,500
Royal NZ Plunket Trust (Invercargill branch)	5,000
Rugby Southland	255,000

SCIP Limited	750
Shakespeare in the Park Charitable Trust	2,000
Southern Cross Greyhound Adoptions	500
Southern Institute of Technology - 2020 Trade scholarships	54,000
Southern Institute of Technology - 2021 Trade scholarships	32,500
Southern Sou'NZ Inc	600
Southland A & P Association	2,000
Southland ACC Advocacy Trust	2,500
Southland Amateur Rowing Association Inc	4,250
Southland Art Society Inc	3,400
Southland Asthma Society Inc	6,000
Southland Badminton Association	30,000
Southland Basketball Association Inc	47,500
Southland Beneficiaries and Community Rights	12,500
Southland BMX Club Inc	65,000
Southland Chevrolet Club Inc	1,147
Southland Christmas Parade Charitable Trust	5,500
Southland Clay Target Club Inc	12,000
Southland Community Nursery Conservation Trust	2,500
Southland Cricket Association Inc	101,250
Southland Darts Association Inc	800
Southland Disability Enterprises Ltd	87,500
Southland District Rugby Football League Inc	22,500
Southland Fire Service Museum Society Inc	2,500
Southland Foodbank Charitable Trust	10,000
Southland Football Inc	78,750
Southland Group NZ Riding for the Disabled Inc	7,500
Southland Hindi School Charitable Trust Board	3,750
Southland Indoor Bowls Centre Inc	11,000
Southland Indoor Leisure Centre Charitable Trust	300,000
Southland Kennel Association Inc	1,000
Southland Kidney Society Inc	1,500
Southland Literacy Association Inc	3,000
Southland Motorcycle Club Inc	20,000
Southland Multicultural Council Inc	7,500
Southland Multiple Sclerosis Society Inc	8,750
Southland Power Boat Club	2,250
Southland Racing Club Inc	5,000
Southland Rodeo Association Inc	5,210
Southland Schools Pipe Band Programme Trust	25,350
Southland Secondary Schools Sport	7,500
Southland Society of Model Engineers Inc	1,000
Southland Softball Association Inc	20,000
Southland Sports Car Club Inc	10,000
Southland Stock Car Drivers Association Inc	2,750
Southland Table Tennis Association Inc	16,000
Southland Tennis Association Inc	29,000
Southland Triathlon and Multisport Club Inc	5,500
Southland Workers Educational Association Inc	7,500
Southland Youth One Stop Shop Trust	12,500
SPCA New Zealand	4,385
Speech Communication Association Southland Branch	1,361
Spirit Army	2,500
Sport Southland	158,401
Squash Southland Inc	22,500
Stadium Southland Ltd	4,000
Star Rugby Football Club Invercargill Inc	7,500
Storytime Foundation Trust Board	3,000
Strings of Southland Charitable Trust	1,100
Swimming Southland Inc	35,000
Talent Development Southland Charitable Trust	30,500
The Hawthorndale Care Village Charitable Trust	495,000
The Scout Association of New Zealand	3,000
The Stroke Foundation of NZ Ltd	2,415
The YMCA of Invercargill Charitable Trust	17,500
Thistle FC Inc	5,750
Touch Southland Inc	30,000
Tuurama Trust - 2021/2020 Matariki Festivals	15,000
Volleyball Southland Inc	17,500
Waihopai Association Football Club Inc	2,500
Waihopai City Lions Club Inc	2,500
Waihopai Runaka Inc	200,000
Waikiki Rugby Football Club Inc	7,500
Windsor North School	1,250
Grants returned	(21,226)

TOTAL
\$4,030,475

ILT
FOUNDATION



For Our Community

03 211 3640 | ilt@ilt.co.nz
PO Box 208, Invercargill 9840, New Zealand
www.ilt.co.nz



FOUNDATION

03 211 3640 | iltfoundation@ilt.co.nz
PO Box 1771, Invercargill 9840, New Zealand
www.iltfoundation.org.nz



*Photos: D. Wheeler, ruggedsouthphotography
and Sharne Parkinson*